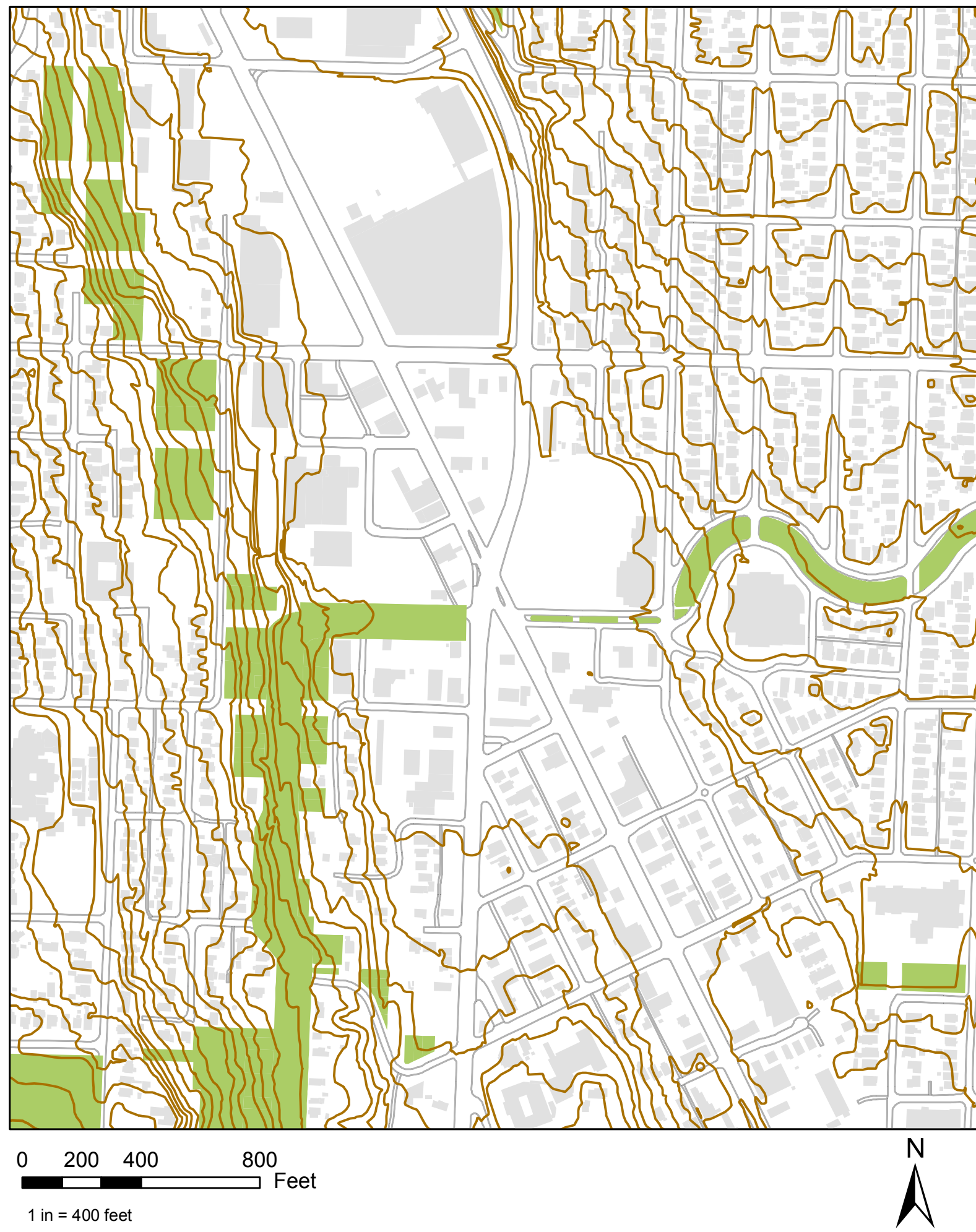


Topography | Open Space | Pedestrian Movement

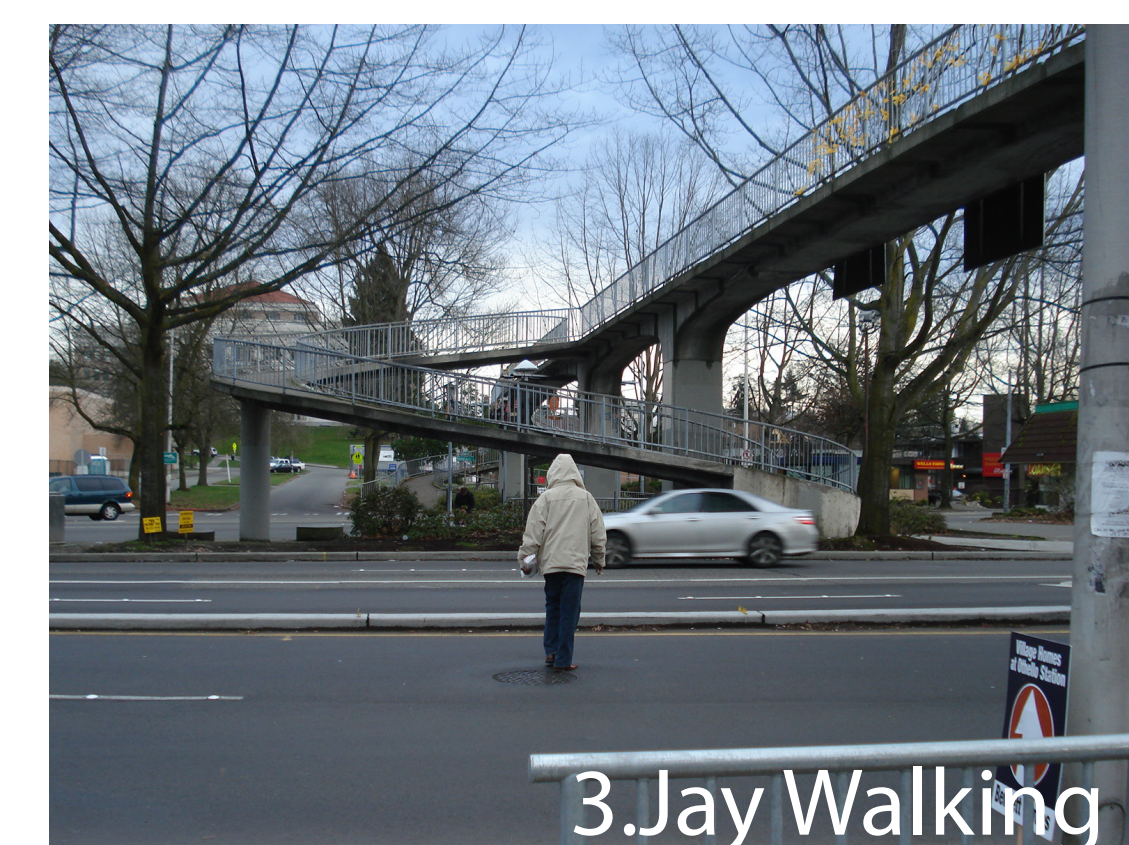
Physical
Pedestrian
Environment



- Elevation on the site ranges from 270' on the western edge to 170' on the eastern edge with an elevation of 60' at Rainier Avenue South
- Textured sidewalks are used along roads with steep slopes to allow use in poor weather conditions (as seen in the photo above)
- Rainier Avenue South lies in the basin of the Rainier Valley between two sloping hillsides
- The Cheasty Greenbelt can be seen on the map bordering the western edge of the site
- Some of the open space indicated on the map is unusable due to dense vegetation or steep terrain



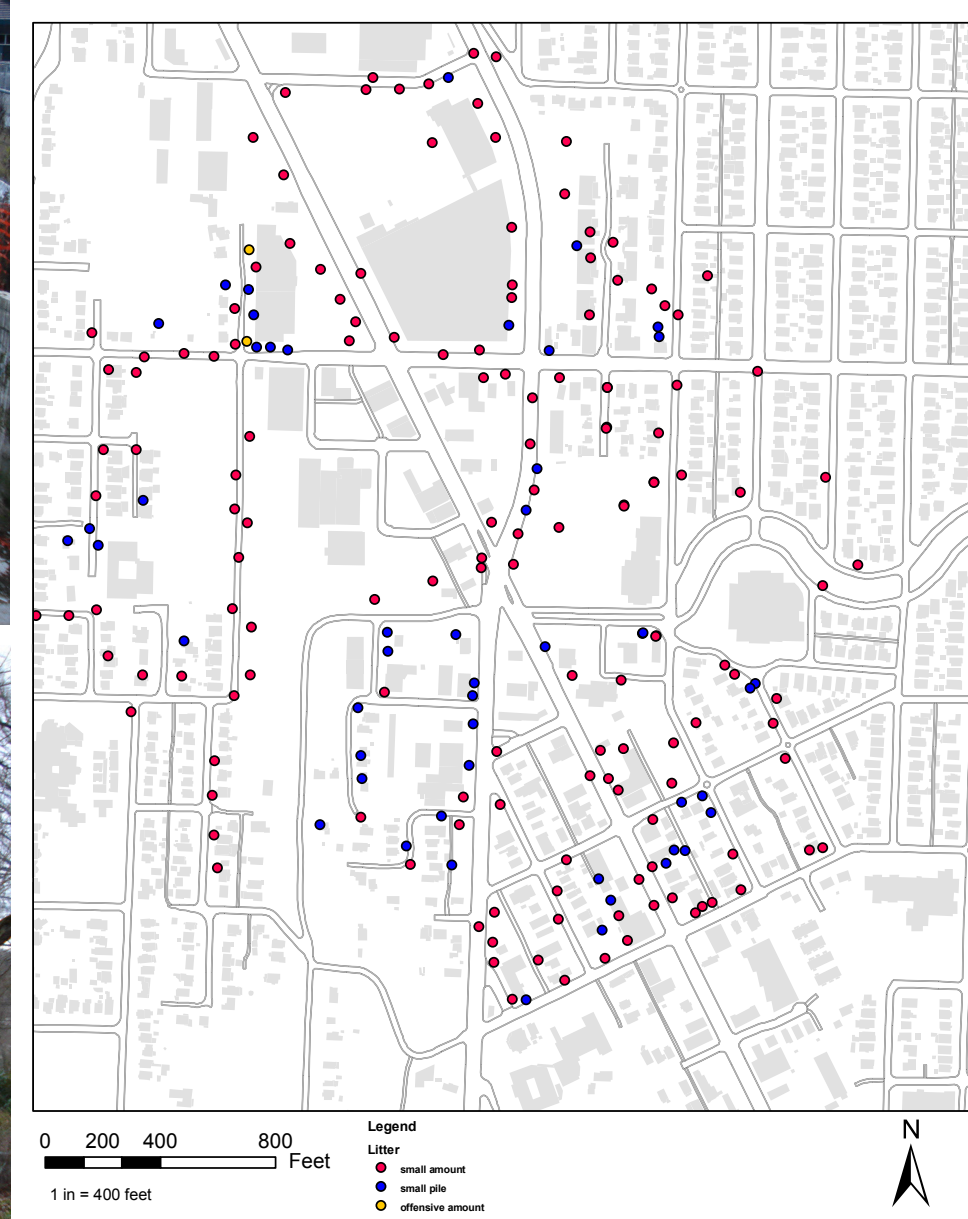
- Light Rail
- Pedestrian
- - - Trail
- Bike Path
- Lightening
- Bus Stop
- Mount Backer Station
- Mount Backer Transit Center



Public Spaces,
Public Life
for South
Downtown
Seattle



courtesy Gehl Architects



- Trash receptacles are only found in the areas near Franklin High School, the Mt. Baker Light Rail Station, and the Metro bus shelters



- Litter can be found throughout the site, creating an unpleasant walking environment in many areas

Christy Alexander
Leslie Batten
Selina Chiu
Emily Grigg-Saito
Sarah Marshall
Hiroko Matsuono
Doug McIntyre

LArch 504 | Arch 503
Assgn 1: Context Analysis
January 11, 2010