



PUBLIC SPACES | PUBLIC LIFE FOR NORTH RAINIER TOWN CENTER

Scan | Design Master Studio, Winter 2010

Instructors: Nancy Rottle, Kathryn Merlino

Teaching Assistant: Heide Martin

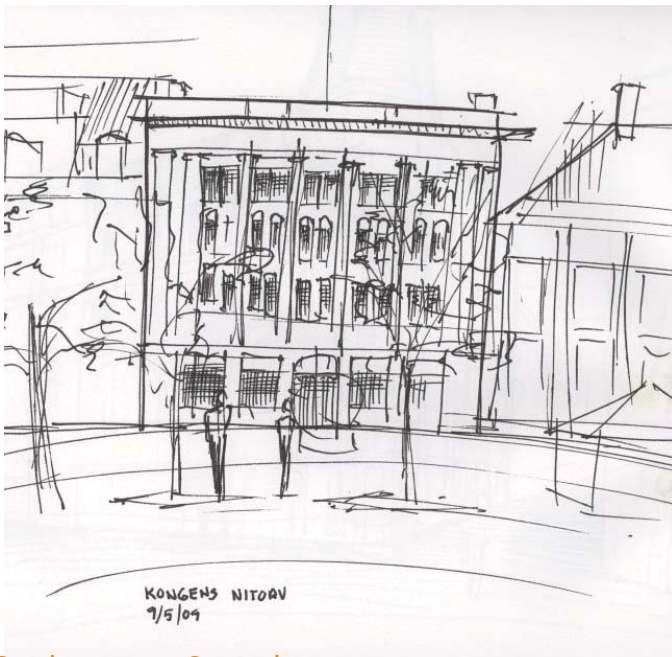
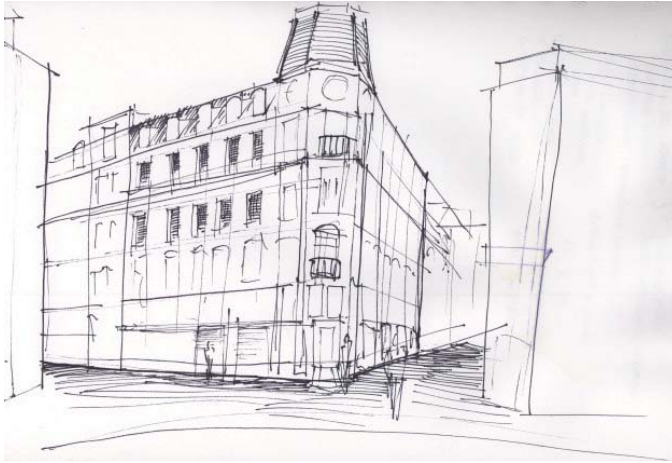
Study tour to Copenhagen
Site Analysis and Existing Research
Gehl Methodology
Applying the Lessons Learned

Study tour to Copenhagen

Site Analysis and Existing Research

Gehl Methodology

Applying the Lessons Learned



Study tour to Copenhagen
Sketching in Kongens Nytorv
image source: Steve Duncan





Study tour to Copenhagen

Sketching in Fredericksburg

image source: Britt Bandel



Study tour to Copenhagen

Walking Tours

image source: Emily Slotnik



Study tour to Copenhagen

Biking with Gehl Architects and Scan|Design Board

image source: Heide Martin



Study tour to Copenhagen

Biking with Gehl Architects and Scan|Design Board

image source: Nancy Rottle

Study tour to Copenhagen
Office tour with Lene Tranberg
image source: Heide Martin





Study tour to Copenhagen

Tour of Green Roof Institute, Sweden

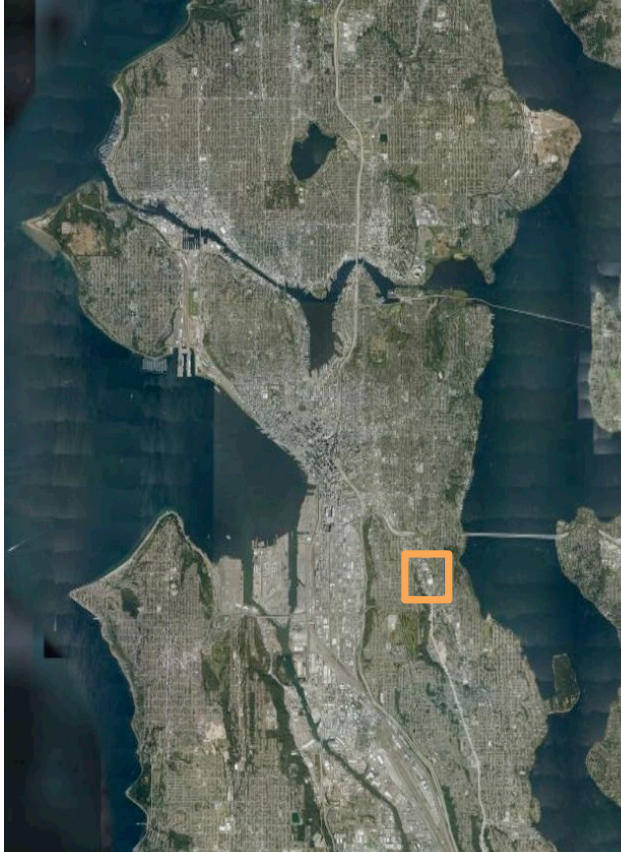
image source: Heide Martin

Study tour to Copenhagen

Site Analysis and Existing Research

Gehl Methodology

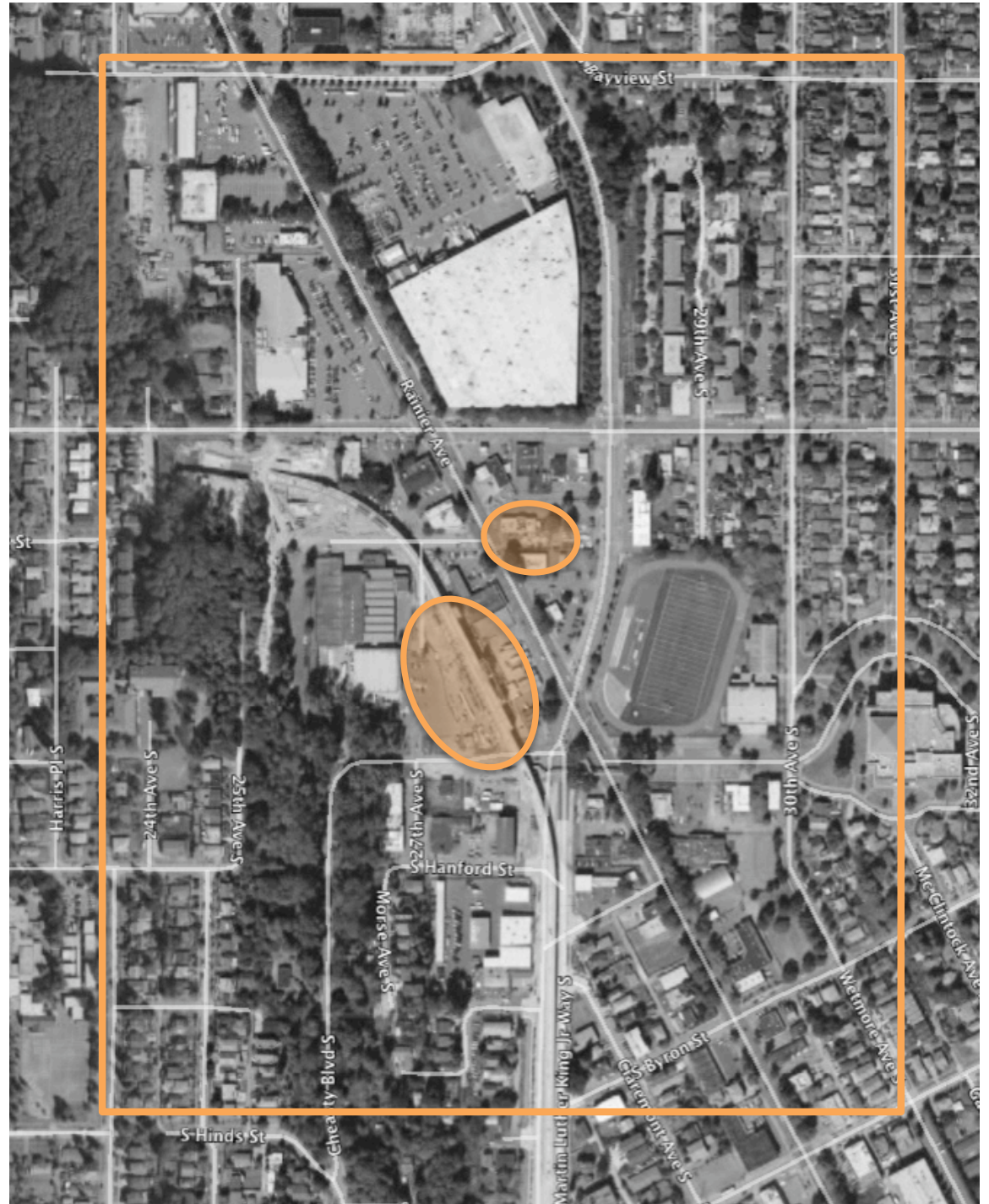
Applying the Lessons Learned



Site Analysis and Existing Research

Site Context

image source: Google Earth





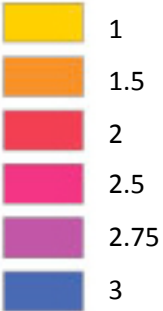
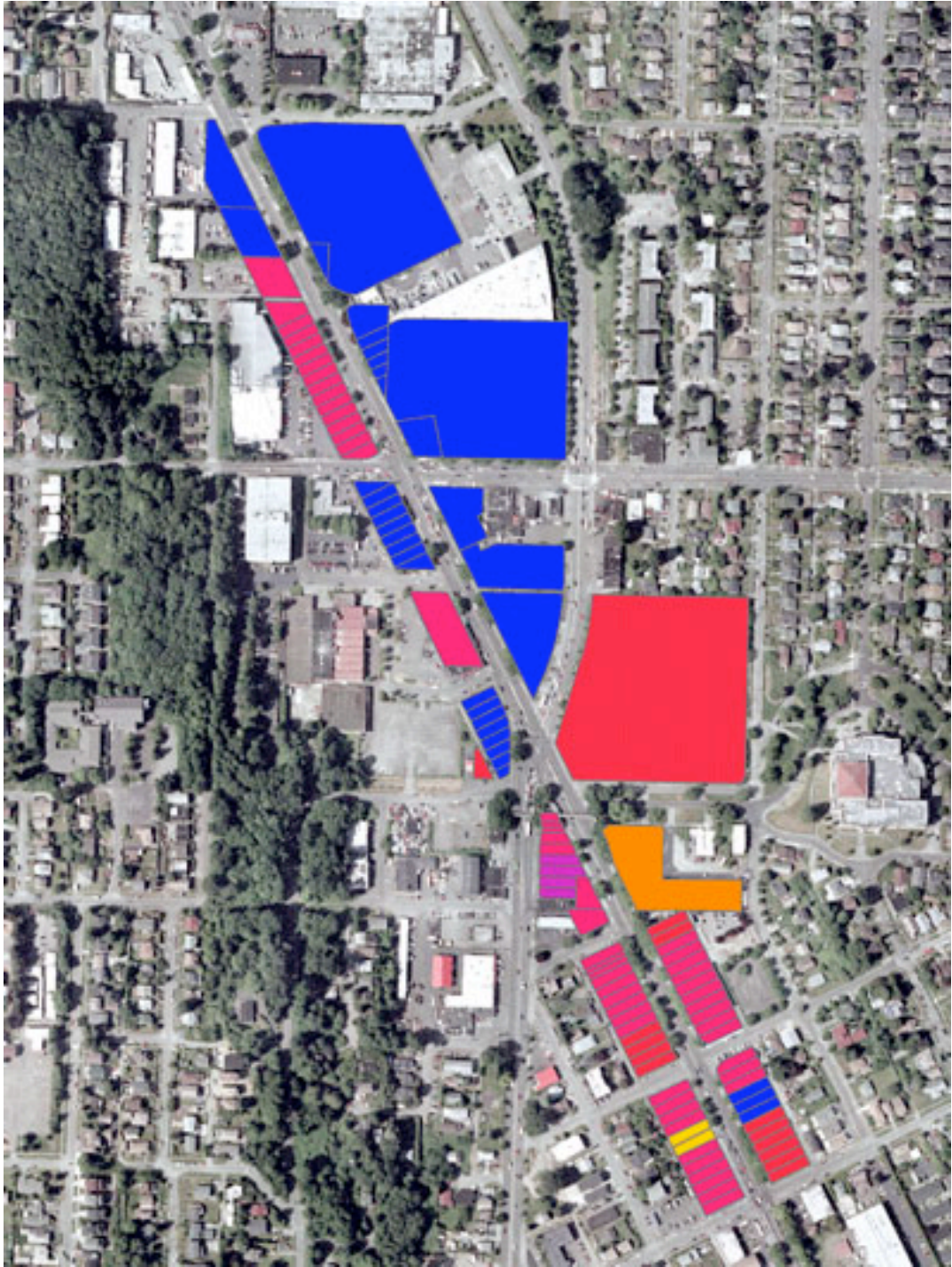
Site Analysis and Existing Research

Link Light Rail

image source: City of Seattle Sound Transit



Site Analysis and Existing Research
 Scan | Design Internship Work, City of Seattle, 2009
 image source: Katherine Wimble



Site Analysis and Existing Research
Scan | Design Internship Work, City of Seattle, 2009
image source: Katherine Wimble

December 2009

North Rainier

NEIGHBORHOOD PLAN UPDATE

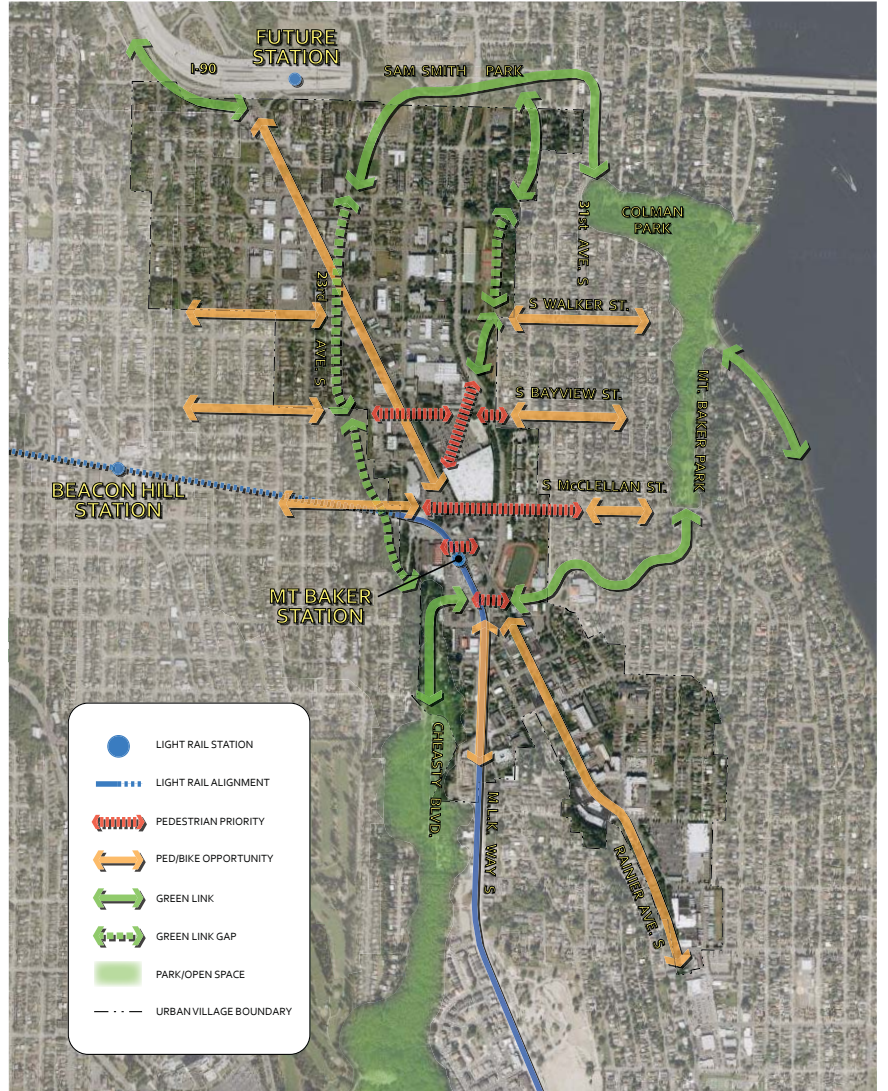


Site Analysis and Existing Research
North Rainier Neighborhood Plan Update
image source: City Of Seattle

Goals, Policies and Strategies
to Achieve the North Rainier
Neighborhood Vision




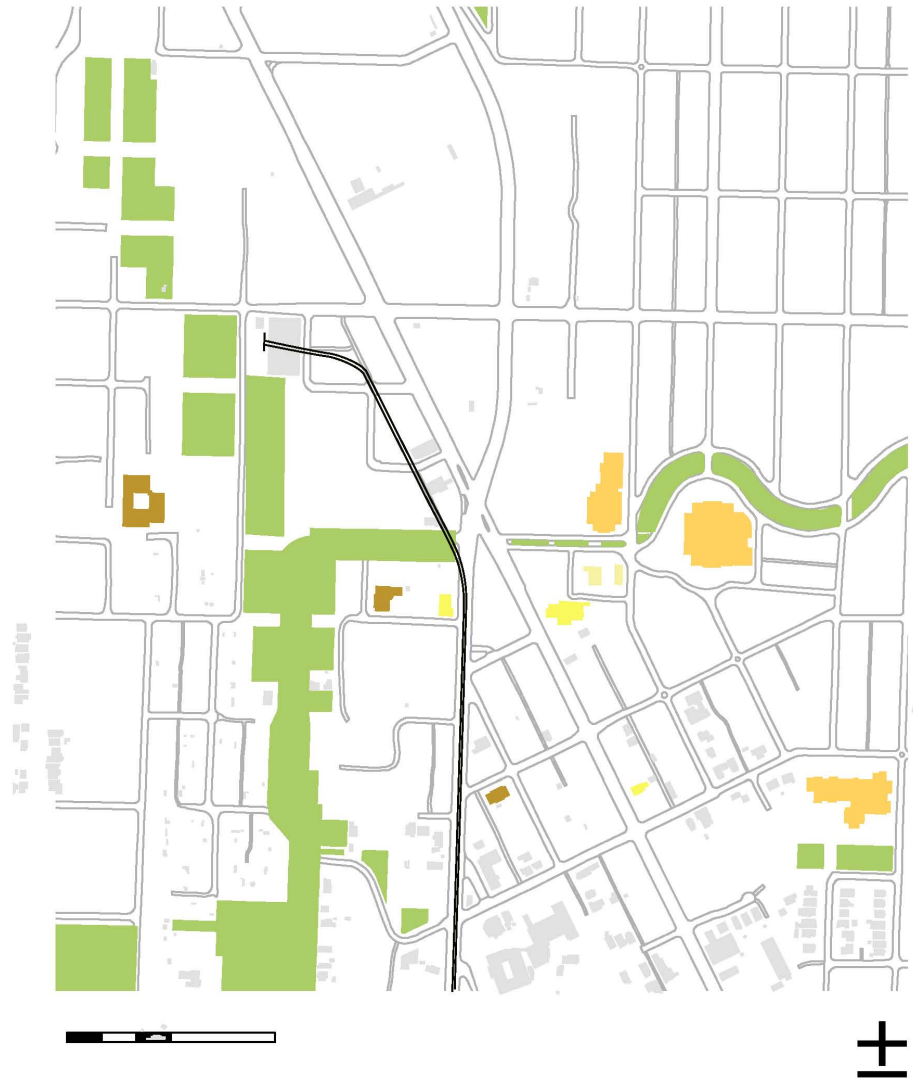
NORTH RAINIER STATION AREA PLAN DIAGRAM



NORTH RAINIER PLACES + CONNECTIONS

Site Analysis and Existing Research
 GGLO Plan & Research
 image source: GGLO

-  Parks/Recreation
-  Academic Institution
-  Religions Institution
-  Government (fire station)

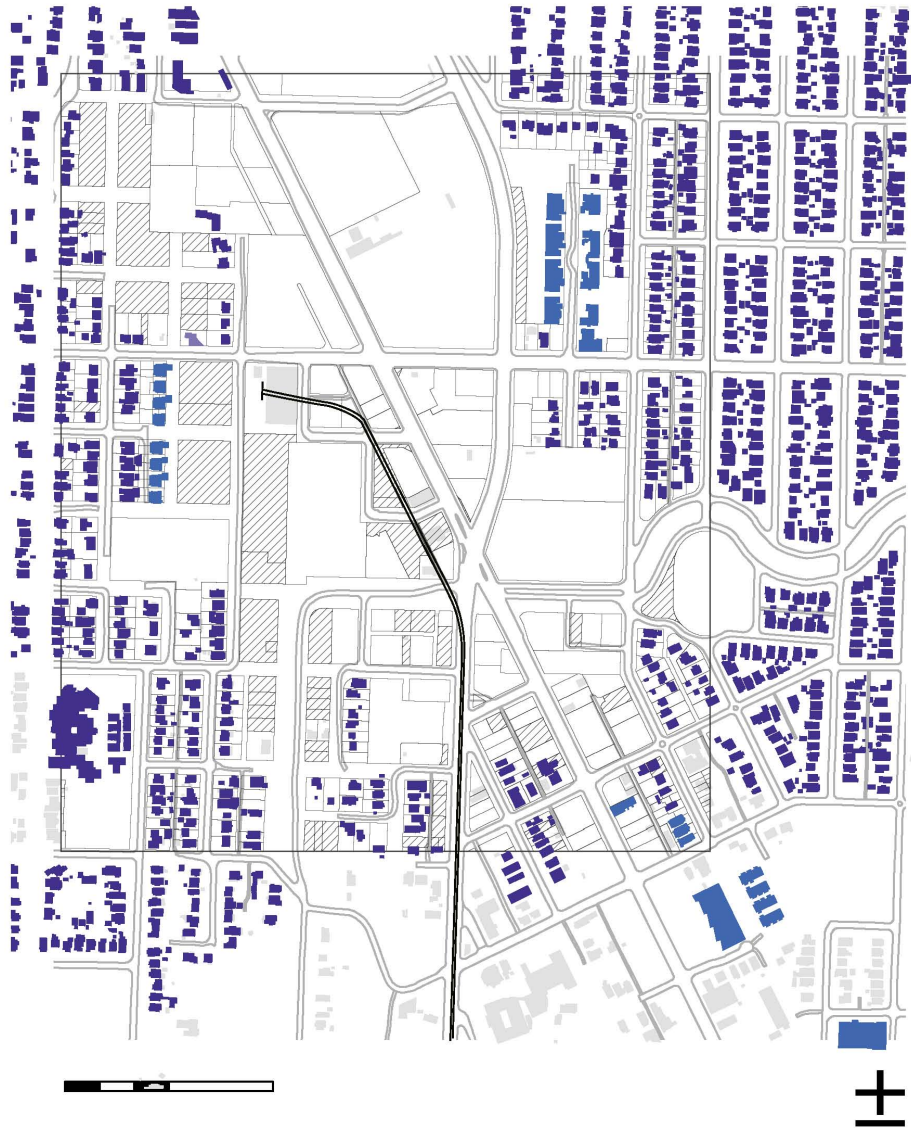


Site Analysis and Existing Research

Parks and Community Space

image source: Lauren Keene

- Single-family house
- Multi-family house

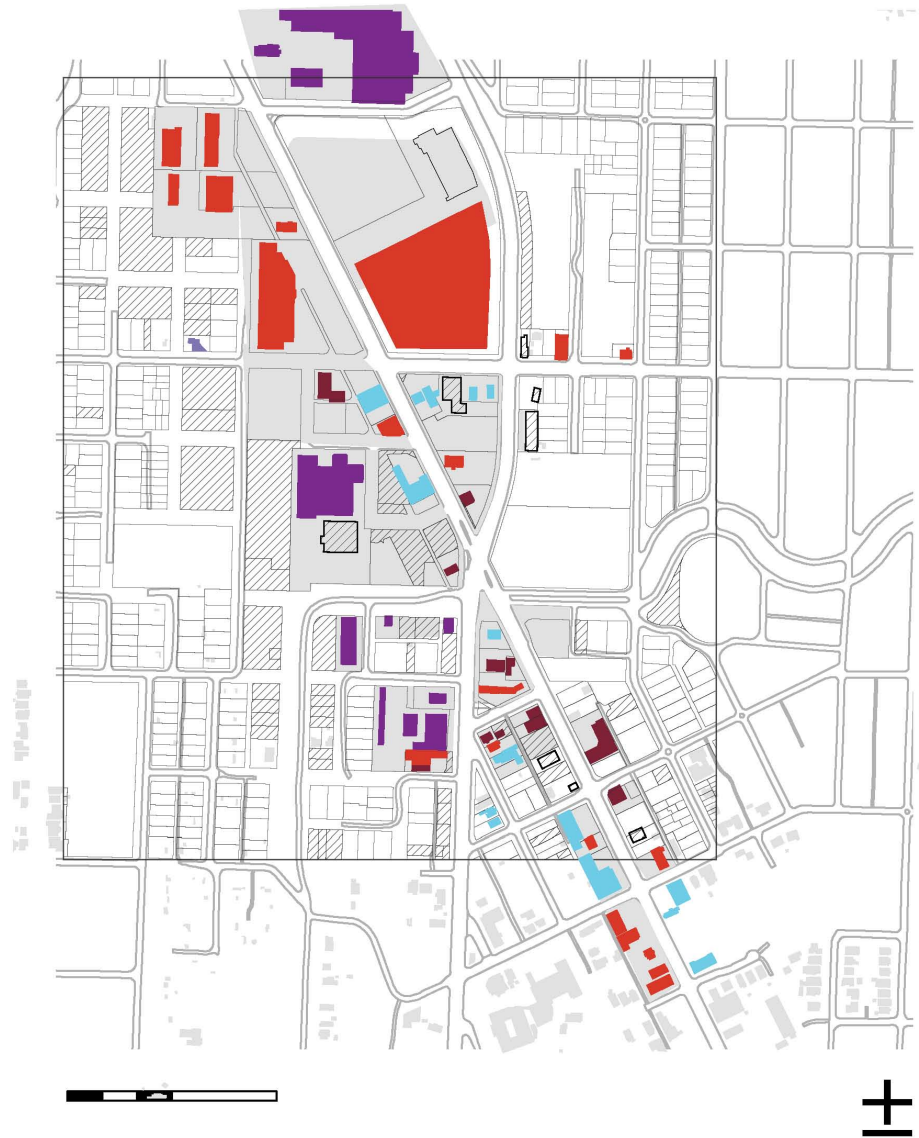


Site Analysis and Existing Research

Residential Areas

image source: Lauren Keene

- Restaurant/ Cafe
- Retail
- Car focused industry
- Industrial
- Vacant
- Parking/Paving



Site Analysis and Existing Research

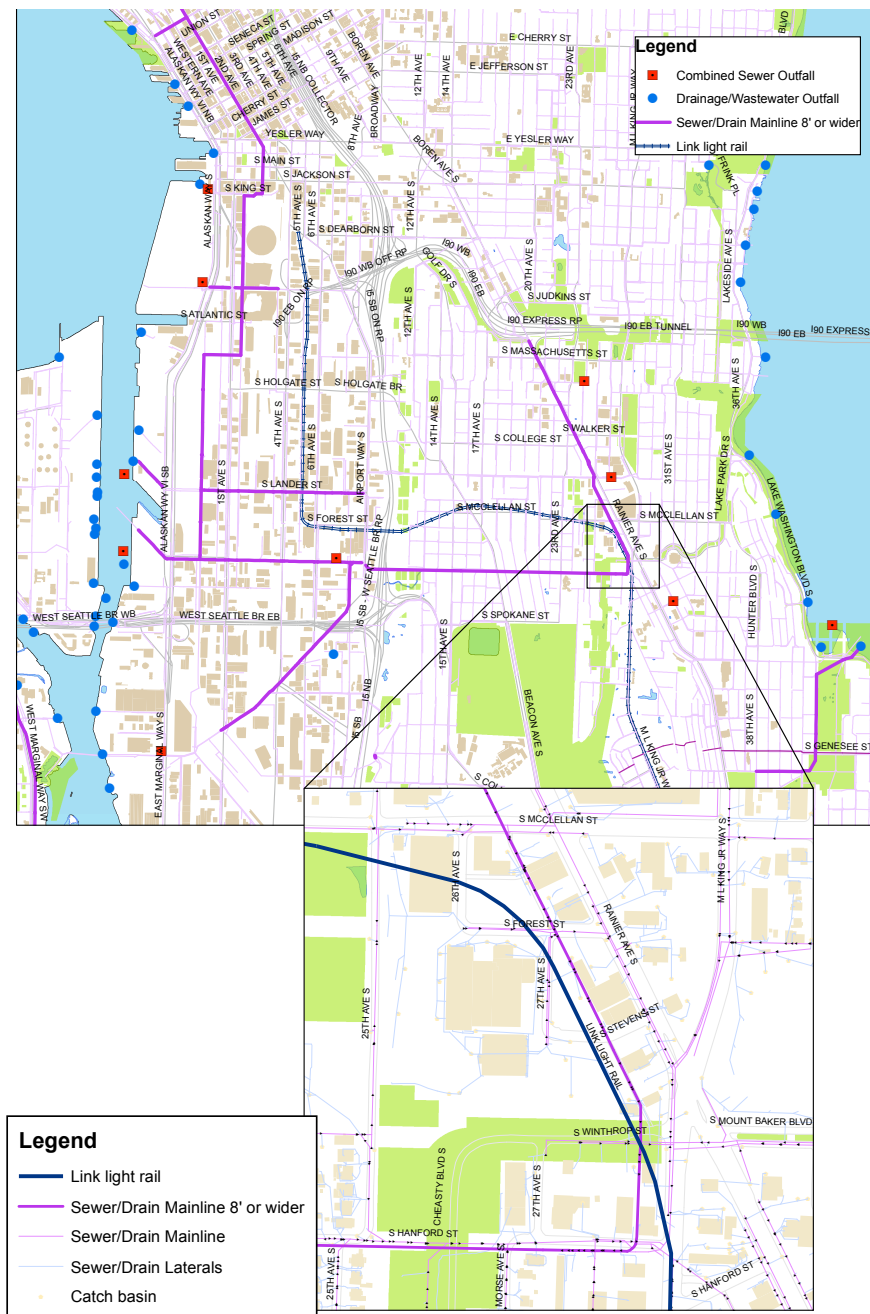
Auto Focused Space

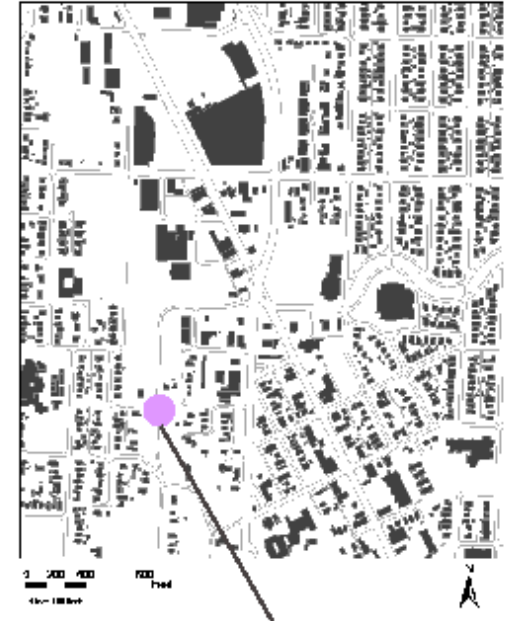
image source: Lauren Keene

Site Analysis and Existing Research

Stormwater Drain Pipes

image source: Brian Monwai





Cheasty Blvd S

Site Analysis and Existing Research History and Culture

Quick Facts:

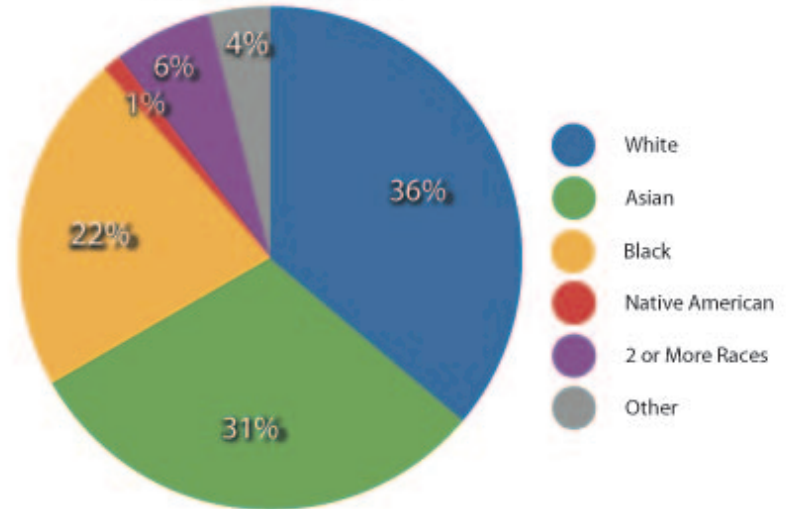
Total Population: 25,487
Percent Change Since 1990: +16%
Percent Change Since 2000: + 7%

Median Age: 38.5
Speaks another Language (other than English) at Home: 38.7%

Density: 7,381 people/sqmi

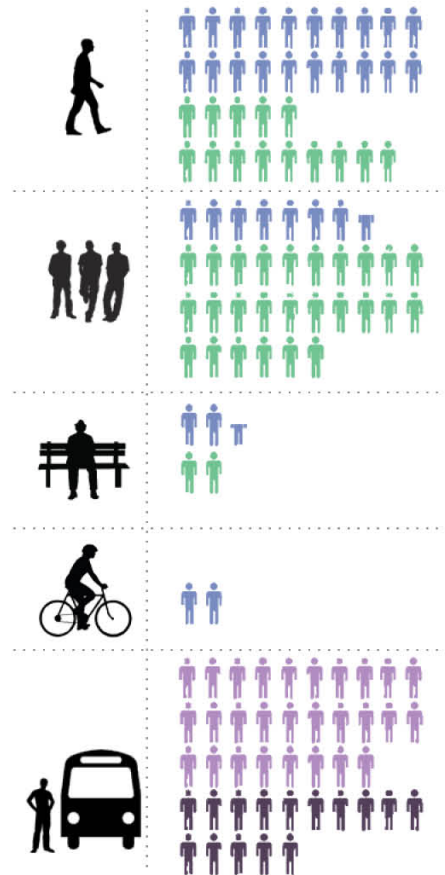
Average Income: \$67,950
Percent Change Since 1990: + 86%
Percent Change Since 2000: + 22%

Race Distribution



Pedestrian Use

Moving + Stationary Activity



*Numbers represent pedestrian activity averaged over a 30 minute period

Rainier Avenue:

- Range of 18,000 to 42,000 vehicles per day*
- 34,800 average vehicles per day*
- 50 collisions per month (2002-2006 average)*

MLK:

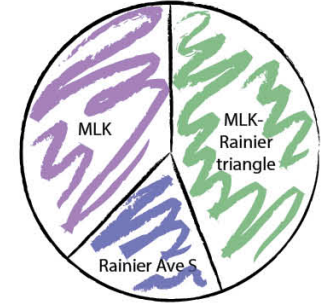
- 13,600 average vehicles per day*

based on SDOT data from 2006

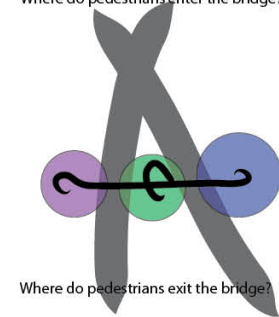
Pedestrian Bridge Use at MLK + Rainier



How do people cross the pedestrian bridge?

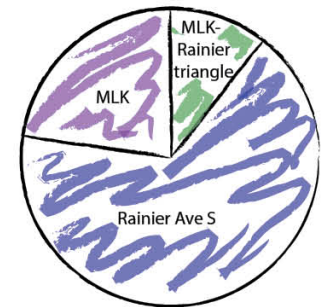


Where do pedestrians enter the bridge?



Where do pedestrians exit the bridge?

- Intended Users
- Unintended Users
- Bus Users
- Light Rail Users



Site Analysis and Existing Research

Vehicle and Pedestrian Counts

Study tour to Copenhagen
Site Analysis and Existing Research
Gehl Methodology
Applying the Lessons Learned

12 quality criteria: How to design spaces for people



Gehl Methodology

12 Quality Criteria

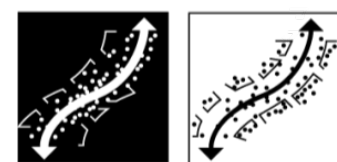
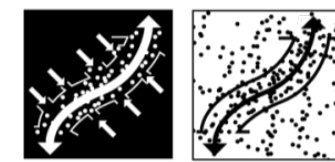
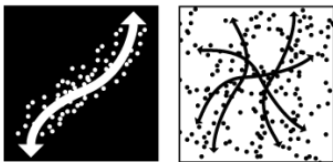
image source: Gehl Architects



Gehl Methodology

12 Quality Criteria Exercise in Copenhagen

image source: Heide Martin



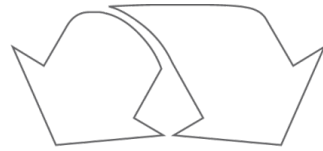
To Assemble
not Disperse

To Integrate
not Segregate

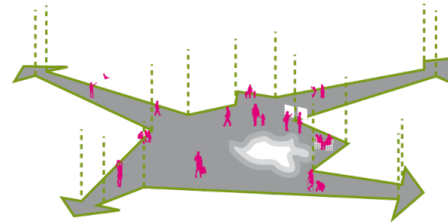
To open Up
not Close In

To Invite
not Repel

PROXIMITY



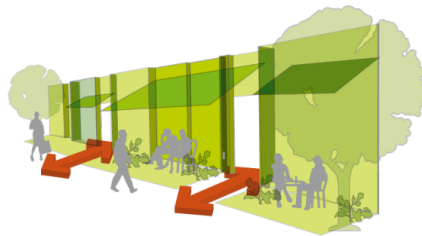
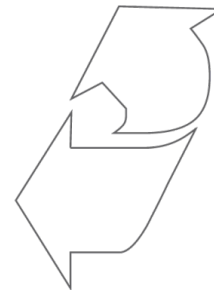
connections



destinations



city life



functions

Study tour to Copenhagen
Site Analysis and Existing Research
Gehl Methodology
Applying the Lessons Learned



Applying the Lessons Learned
Visit from Bianca, Gehl Architects
image source: Heide Martin



Applying the Lessons Learned

Group Master Plans

image source: Google Earth



Applying the Lessons Learned

Partner designs

image source: Heide Martin

NORTH RAINIER

EXISTING ZONING — Likely Build Out



BUILDING HEIGHTS

- Station
- 40'
- 65'
- 85'
- 125'
- Parks property



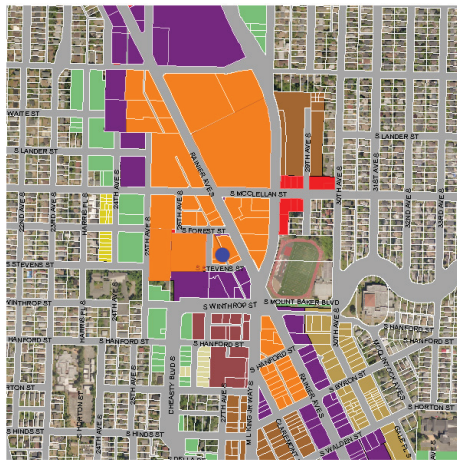
DRAFT RAINIER AVE LOOKING SOUTHEAST

NORTH RAINIER

OPTION 1: 85' Alternative



BIRD'S EYE VIEW LOOKING NORTHWEST



- Station
- 30'
- 30'
- 40'
- 65'
- 85'
- 125'
- Parks property

BUILDING HEIGHTS



RAINIER AVE LOOKING SOUTHEAST

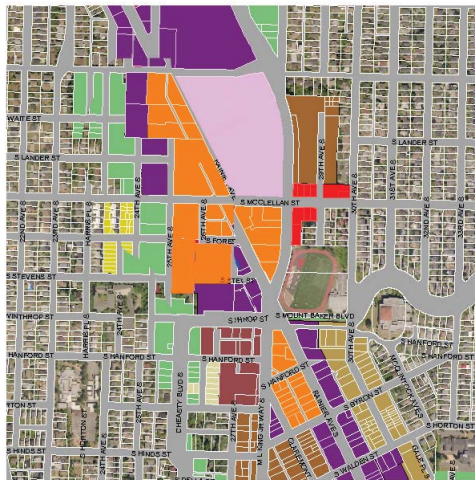
DRAFT

NORTH RAINIER

OPTION 2: 125' Alternative



BIRD'S EYE VIEW LOOKING NORTHWEST



- Station
- 30'
- 30'
- 40'
- 65'
- 85'
- 125'
- Parks property

BUILDING HEIGHTS

DRAFT



RAINIER AVE LOOKING SOUTHEAST

Public Spaces | Public Life for North Rainier Town Center

ScanIDesign Master Studio, Winter 2010 [Larch 504/Arch504]

Instructors: Nancy Rottle (LA) and Kathryn R. Merlino (ARCH)

Teaching Assistant: Heide Martin

With Gehl Architects: Helle Søholt and Bianca Hemansen

MID-TERM REVIEW SCHEDULE

REVIEWER TEAMS	2:00 - 3:15	3:30 - 5:00
TEAM A [A] DAVID CUTLER, GGLO [L] CAITLIN EVANS, SWIFT [P] DARBY WATSON, SDOT [L] KATHERINE WIMBLE	Group ONE - 65': Stephanie, Hiroko, Selina, Tim	Group TWO - 65': Andy, Breanne, Claire, Lori, Kristi
TEAM B [L] MARIEKE LACASSE, GGLO [A] PETER COHAN (LATER) [A] AMANDA REED [C] TODD VOGEL, ISI [P] GLORIA RAMERIZ, BE & SEED	Group THREE - 85': Jeanine, Heather, Jess, Doug, Leslie	Group FOUR - 85': Sarah, Deanna, Christy, Maggie, Brian
TEAM C [A] ADAM SHICK [P] SARAH ROBINSON, DPD [C] PAT CHEMNICK, SEED [L] MARIN BJORK, BERGER; NOELLE HIGGINS, SWIFT CO.	Group FIVE - 125': Steve, Jenny, Emily G-S, Lauren	Group SIX - 125': Dave, Britt, Emily S., Merritt, Julia
TEAM D [L] VANESSA LEE, OTAK [A] ELLEN CECIL, OK ARCHITECTS [P, L] PAUL CHASAN, SEATTLE GREAT CITY [P] LIZ STENNING	Group TWO - 65': Andy, Breanne, Claire, Lori, Kristi	Group ONE - 65': Stephanie, Hiroko, Selina, Tim
TEAM E [A, L] DON VEHIGE, GGLO ARCHITECTS [A] GUNDULA PROSHCK (LATER) [P] MARTY CURRY [L] KENICHI NAKANO	Group FOUR - 85': Sarah, Deanna, Christy, Maggie, Brian	Group THREE - 85': Jeanine, Heather, Jess, Doug, Leslie
TEAM F [L] PAUL CRANE, CITY OF EVERETT [A] CHRIS LIBBY, GGLO [P] ANDREA CLINKSCALES, SOUND TRANSIT [L] ANNIKA MCINTOSH	Group SIX - 125': Dave, Britt, Emily S., Merritt, Julia	Group FIVE - 125': Steve, Jenny, Emily G-S, Lauren

ROVING: BIANCA HERMANSEN, GEHL ARCHITECTS

Applying the Lessons Learned
Midreview