

Waterfront
Seattle.org



WATERFRONT SEATTLE PROJECT AREA

ELLIOTT BAY

LAKE UNION

James corner field operations

-  CORE PROJECT AREA
-  FRAMEWORK PLAN ELEMENTS



Sources: City of Seattle GIS, Google Maps

2010 2011 2012 2013 2014 2015 2016 2017 2018 2019

WATERFRONT SEATTLE

FRAMEWORK PLAN & CONCEPTUAL DESIGN

POTENTIAL DESIGN AND CONSTRUCTION OF EARLY PROJECTS*

DESIGN ALASKAN WAY + ELLIOTT-WESTERN CONNECTION

DESIGN PUBLIC SPACES IN RIGHT OF WAY

PROPOSED SR99 TUNNEL OPENS

VIADUCT DEMOLITION

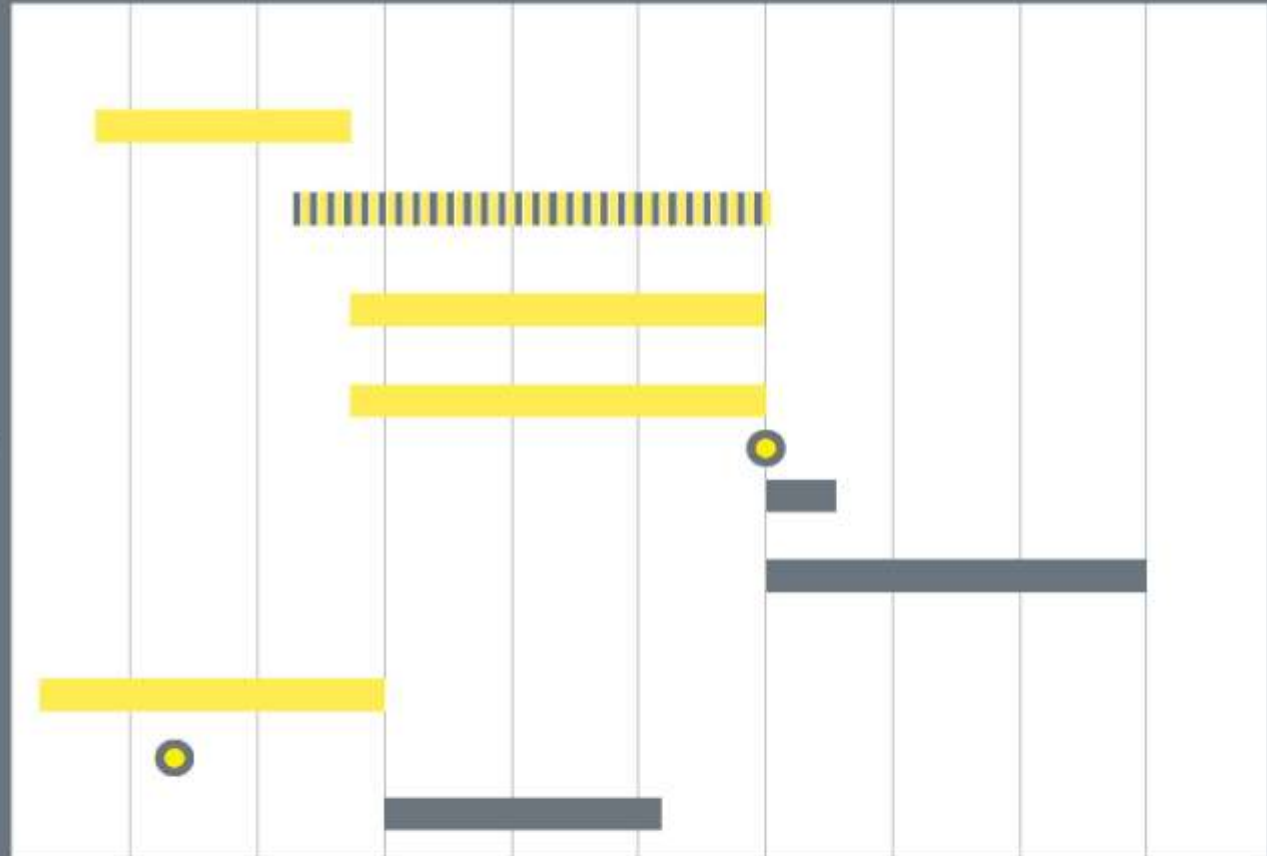
CONSTRUCT PUBLIC SPACES, STREETS AND UTILITIES

ELLIOTT BAY SEAWALL

DESIGN

PREFERRED ALTERNATIVE SELECTED

CONSTRUCTION



2010 2011 2012 2013 2014 2015 2016 2017 2018 2019

*EARLY PROJECTS COULD INCLUDE:
 Improved east-west pedestrian connections
 Railroad Way S. pedestrian street
 Pedestrian bridge at Vine St & hillclimb assist at Union St
 Waterfront Park, Pier 62/63

 = DESIGN

 = CONSTRUCTION

 = MILESTONE

 = POTENTIAL

Waterfront Seattle Guiding Principles

These principles were developed by the Central Waterfront Committee to capture the key civic goals and objectives that should shape the creation of new public spaces on the Central Waterfront project. They expand on established principles from existing city policies, and civic efforts.

- Create a waterfront for all.
- Put the shoreline and innovative, sustainable design at the forefront.
- Reconnect the city to its waterfront.
- Embrace and celebrate Seattle's past, present and future.
- Improve Access and Mobility (for people and goods).
- Create a bold vision that is adaptable over time.
- Develop consistent leadership—from concept to construction to operations.

Central Waterfront Committee

- Dedicated to creating “A waterfront for all”
- Central Waterfront Committee using its expertise to advise the city on design, public engagement, partnerships and financing, operations and programming
- This is a long-term project that will need a significant civic investment
- Charged with creating the project’s ongoing partnership / entity

PUBLIC MEETING #1
FEBRUARY 17, 2011



WHAT WOULD YOU MOST LOVE TO SEE ON THE WATERFRONT?

PUBLIC INPUT
SURVEY SUMMARY



OPPORTUNITIES TO TOUCH THE WATER



PARKS AND OPEN SPACE



OPPORTUNITIES FOR VIEWS

WHAT WOULD YOU BE MOST DISAPPOINTED TO SEE ON THE WATERFRONT?

PUBLIC INPUT
SURVEY SUMMARY



VIEW BLOCKING STRUCTURES AND LARGE-SCALE PRIVATE COMMERCIAL DEVELOPMENT



OVERSIZED ROADS AND PARKING LOTS AND TOO MUCH HARDSCAPE



TOURIST-ORIENTED USES INCLUDING CHAIN RESTAURANTS AND SHOPS THAT DO NOT FEEL AUTHENTIC TO SEATTLE

TOP 4 PLACES ON THE WATERFRONT

PUBLIC INPUT
SURVEY SUMMARY



PIER 62/63



OLYMPIC SCULPTURE PARK / MYRTLE EDWARDS PARK



PIER 48



SEATTLE AQUARIUM + WATERFRONT PARK

WHAT MAIN USES WOULD ATTRACT YOU TO THE WATERFRONT REGULARLY?

PUBLIC INPUT
SURVEY SUMMARY



PARKS AND PLACES TO STROLL AND SIT



CONCERTS, EVENTS, PUBLIC GATHERING SPACES AND DESTINATIONS



A DIVERSE RANGES OF EATING EXPERIENCES THAT APPEAL TO LOCALS AS WELL AS TOURISTS



PATHWAYS FOR RUNNING, STROLLING AND BIKING

A photograph of a large water fountain spraying water into the air over a body of water. The water is captured in mid-air, creating a misty, white spray. The background shows a dark, overcast sky and distant mountains. The water in the foreground is dark with many small, bright reflections of light.

PUBLIC MEETING #2
MAY 19, 2011



PRELIMINARY DESIGN CONCEPTS

3 CONCEPTS / 3 SCALES

CITY SCALE
URBAN FRAMEWORK SCALE
WATERFRONT SCALE



CITY SCALE

“RECENTERING SEATTLE AROUND THE BAY”



RE-CENTERING SEATTLE AROUND THE BAY

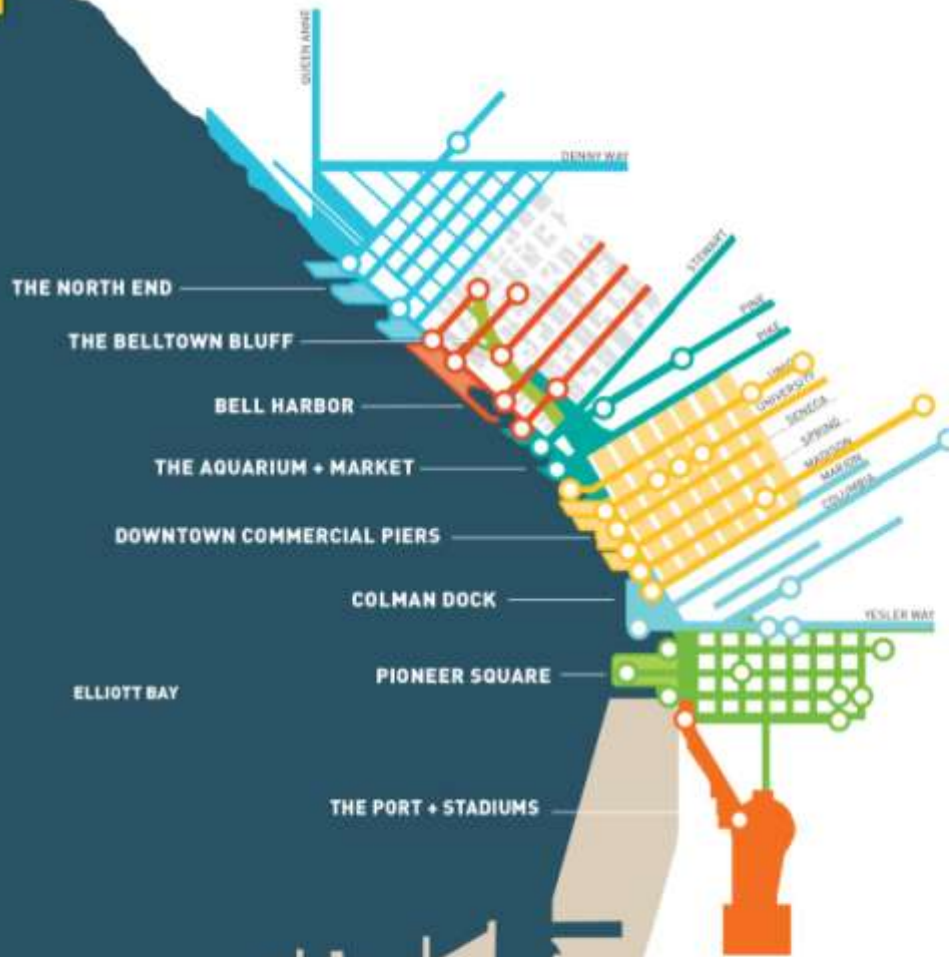




URBAN FRAMEWORK SCALE

“CONNECTING THE CITY TO THE WATERFRONT”

CENTRAL WATERFRONT FRAMEWORK





**PUBLIC
ACCESS**



**PEDESTRIAN
CONNECTIONS**



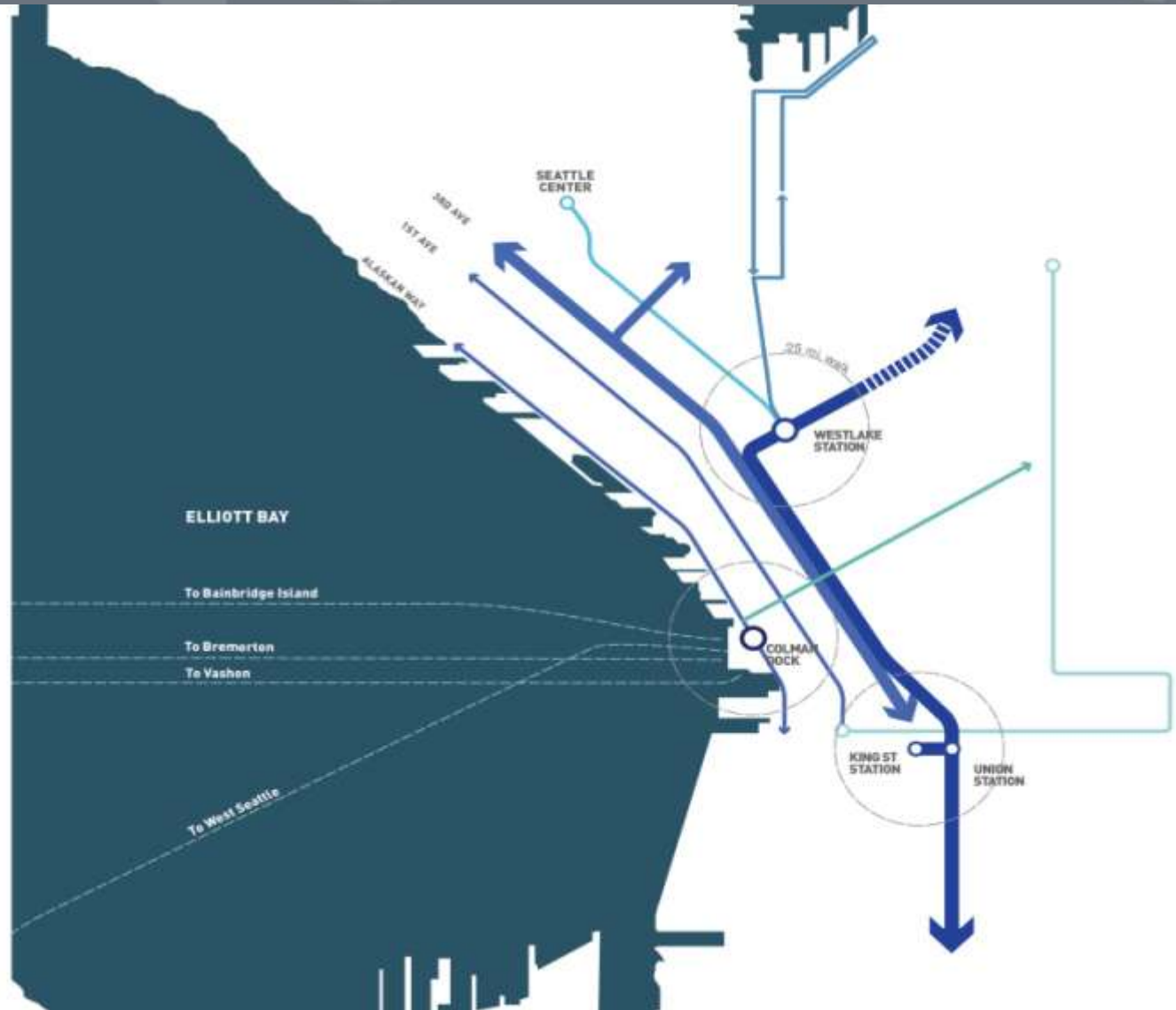
**PUBLIC
TRANSIT**



**EXISTING
PARKING**

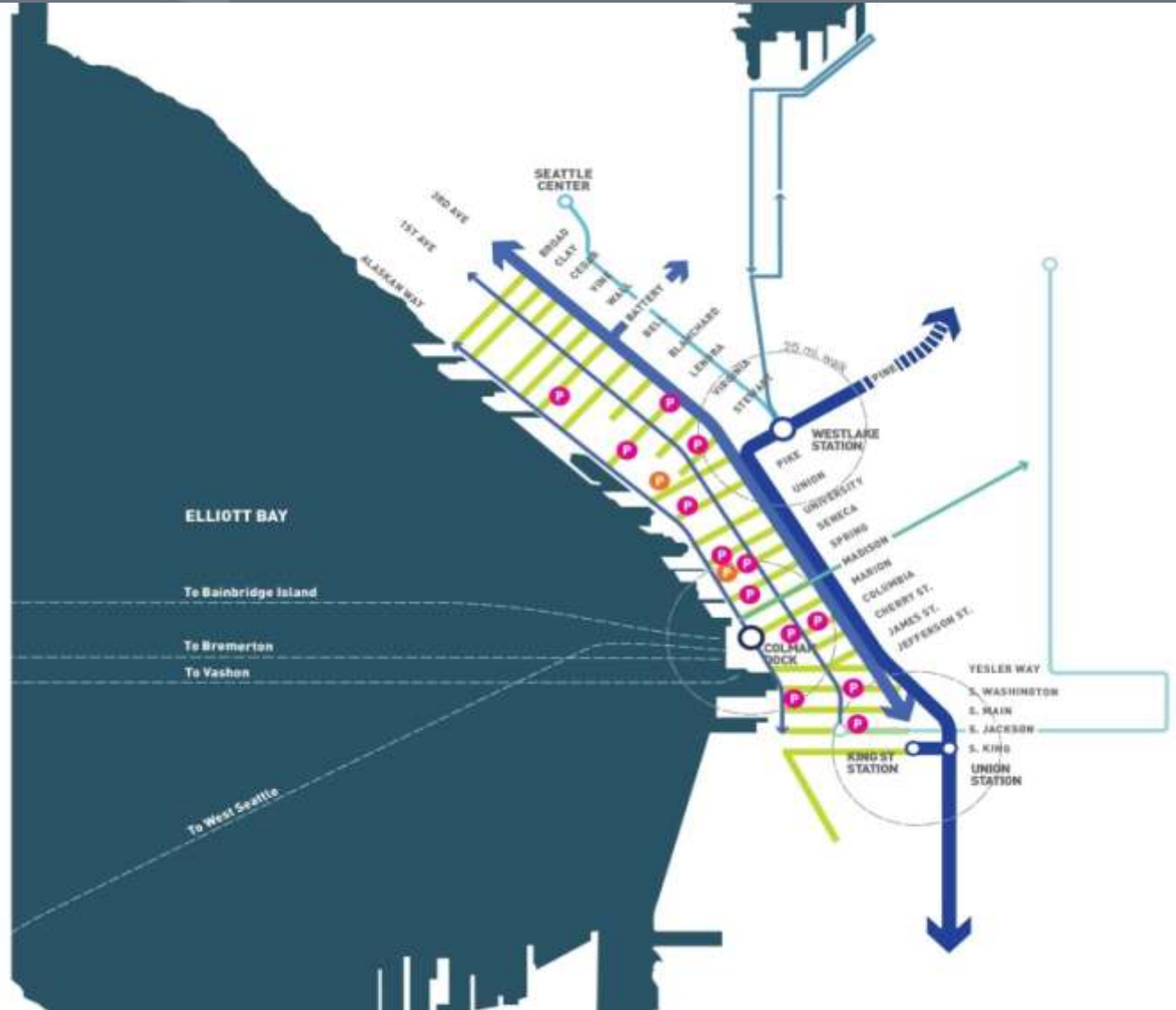
CENTRAL WATERFRONT TRANSIT FRAMEWORK

-  MULTI-MODAL TRANSIT HUB
-  WATER TRANSIT
-  MONORAIL
-  FIRST HILL STREET CAR
-  POTENTIAL MADISON ST TROLLEY BUS
-  SOUTH LAKE UNION STREET CAR
-  3RD AVE CITY BUS SERVICE
-  UNDERGROUND BUS + LIGHT RAIL
-  POTENTIAL 1ST AVE TRANSIT
-  POTENTIAL WATERFRONT TRANSIT







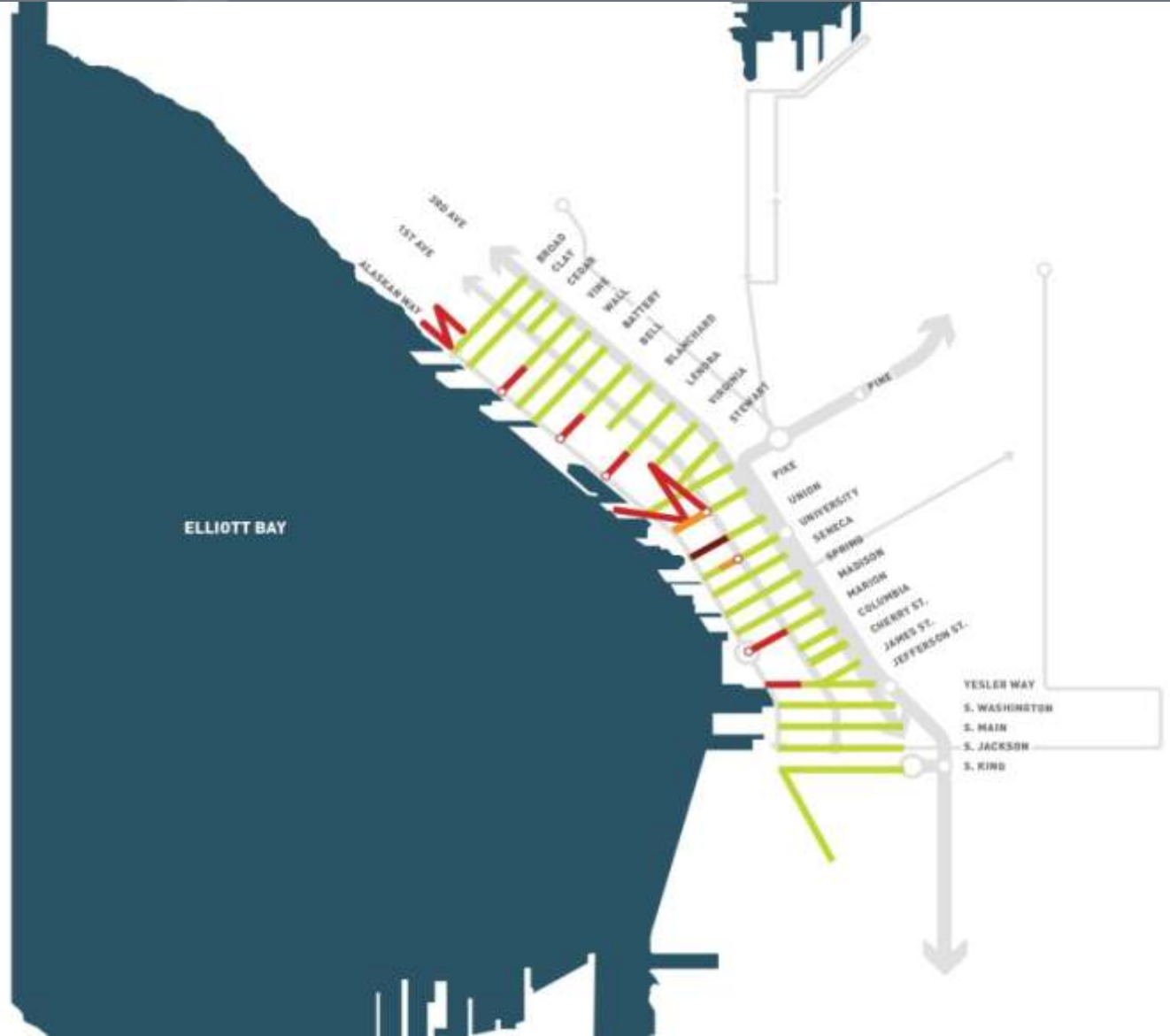
PARKING

- POTENTIAL PARKING
- EXISTING PARKING
- PEDESTRIAN CONNECTIONS
- MULTI-MODAL TRANSIT HUB
- WATER TRANSIT
- MONORAIL
- FIRST HILL STREET CAR
- POTENTIAL MADISON ST TROLLEY BUS
- SOUTH LAKE UNION STREET CAR
- 3RD AVE CITY BUS SERVICE
- UNDERGROUND BUS + LIGHT RAIL
- POTENTIAL 1ST AVE TRANSIT
- POTENTIAL WATERFRONT TRANSIT

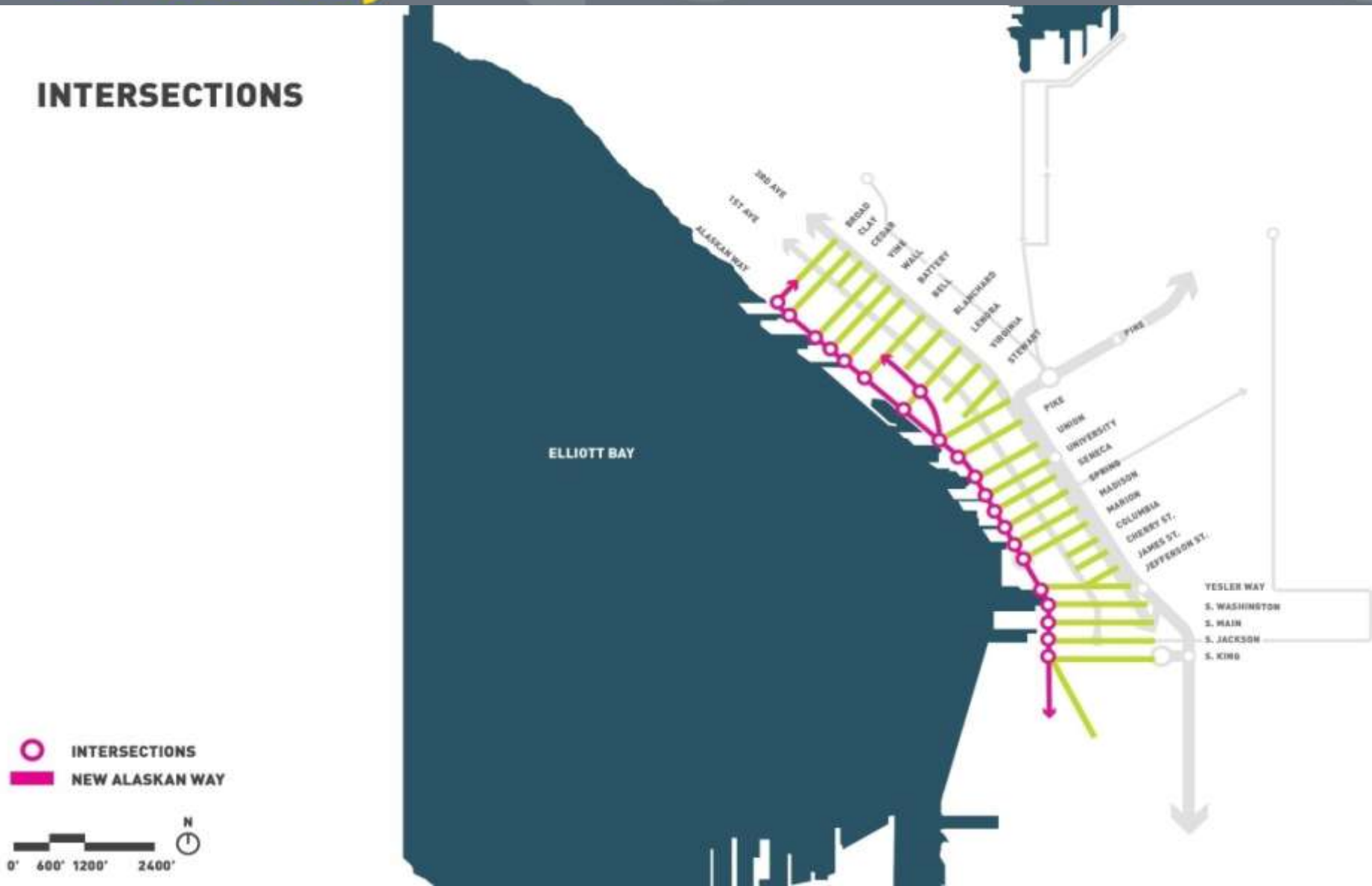


PEDESTRIAN ACCESS ELEMENTS

-  ELEVATOR
-  STAIRS
-  HILL CLIMB ASSIST
-  BRIDGE
-  AT-GRADE CONNECTIONS



INTERSECTIONS



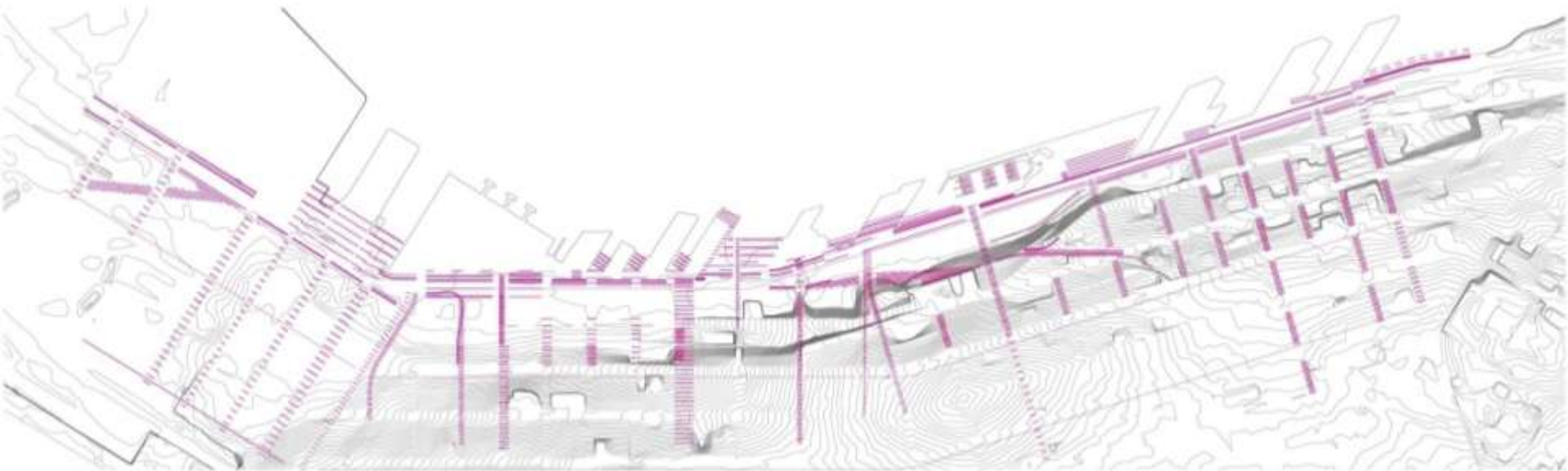




WATERFRONT SCALE

“TIDELINES AND FOLDS”

TIDELINES



SECTIONAL PROFILES



STEPS



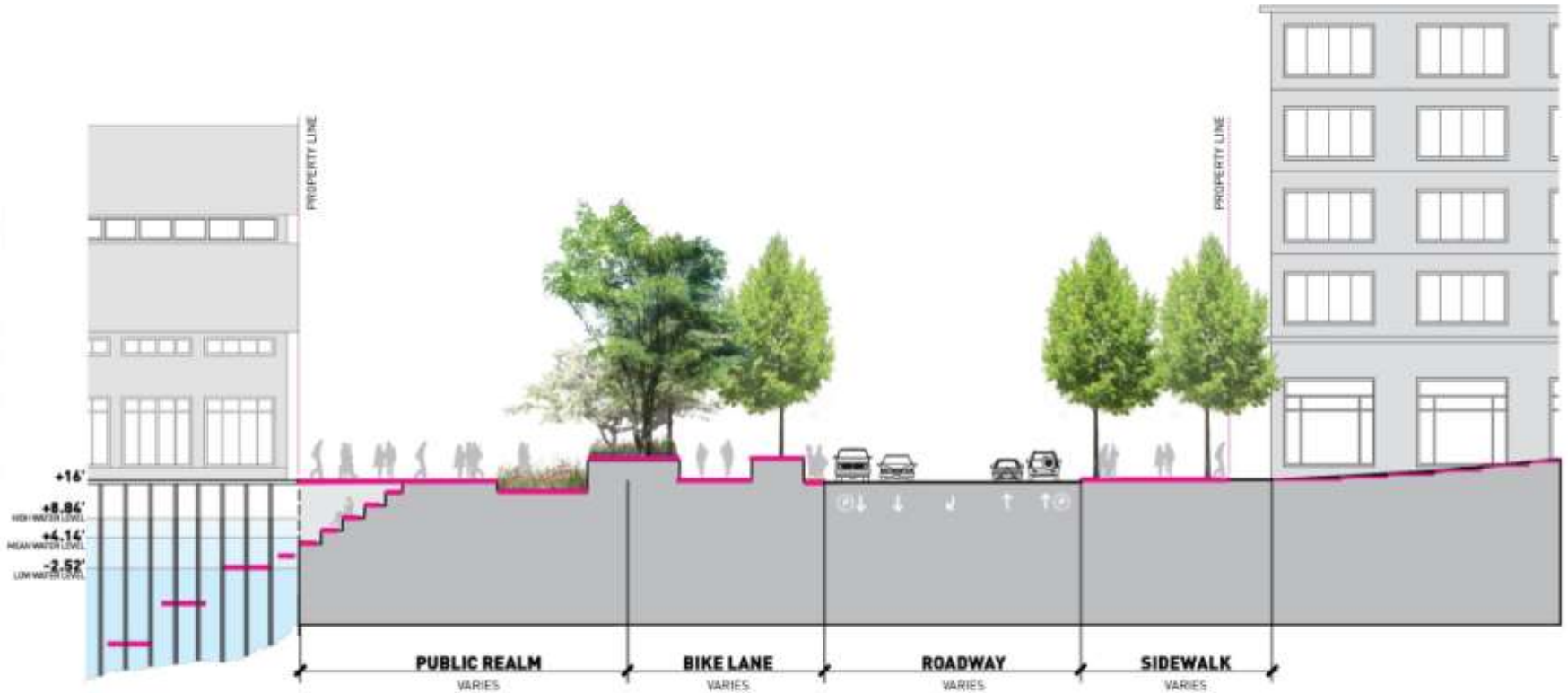
TERRACES



FURNITURE



OVERLOOKS



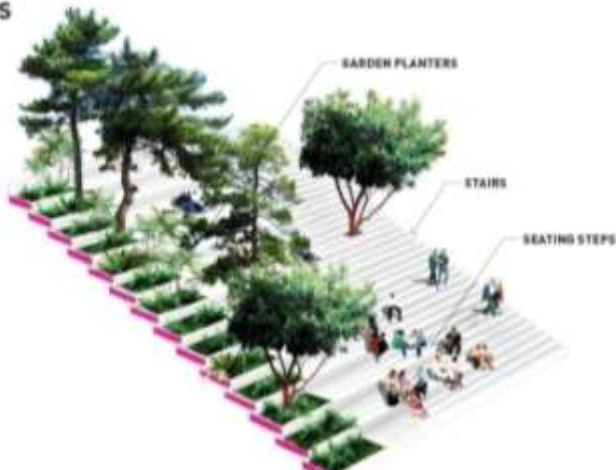
TERRACES



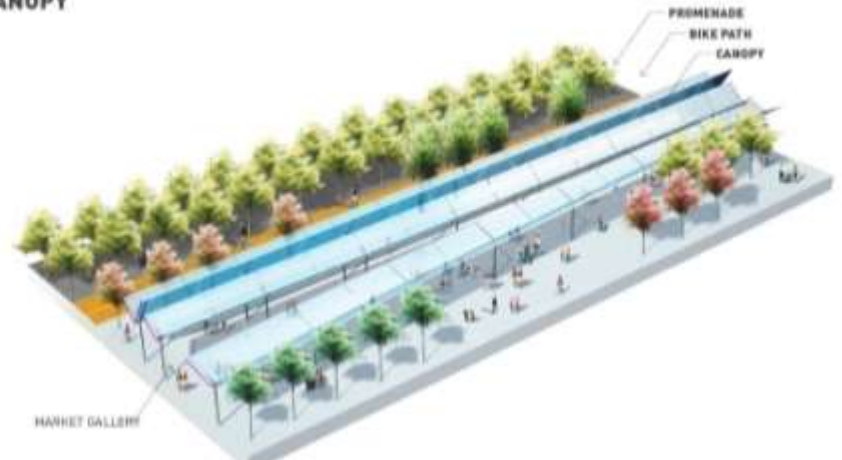
GRAVEL BEACH



GARDEN STAIRS

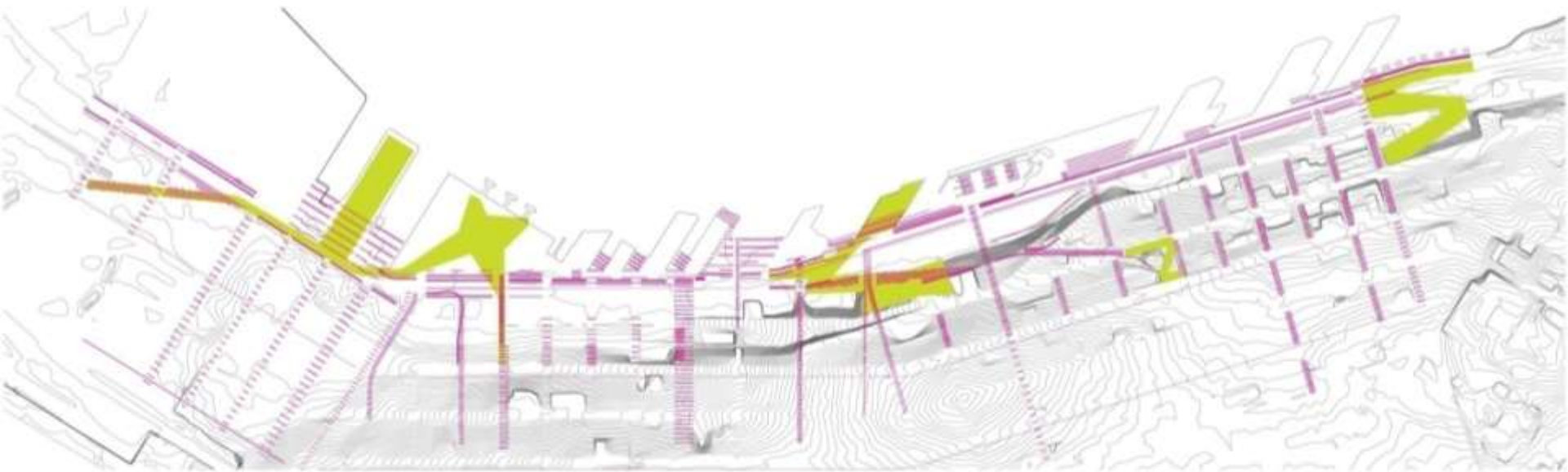


CANOPY

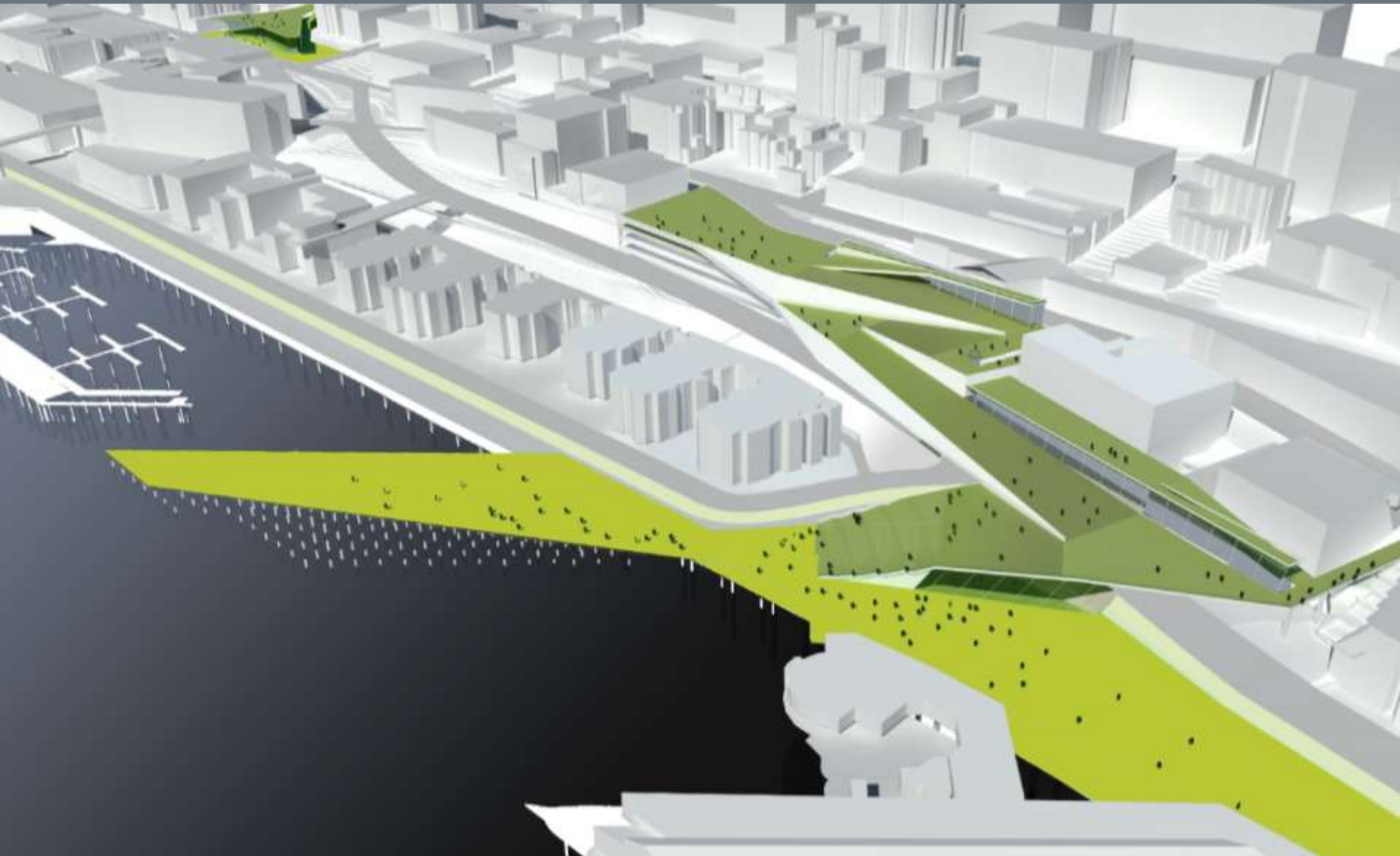




LANDFORM FOLDS



Waterfront
Seattle.org

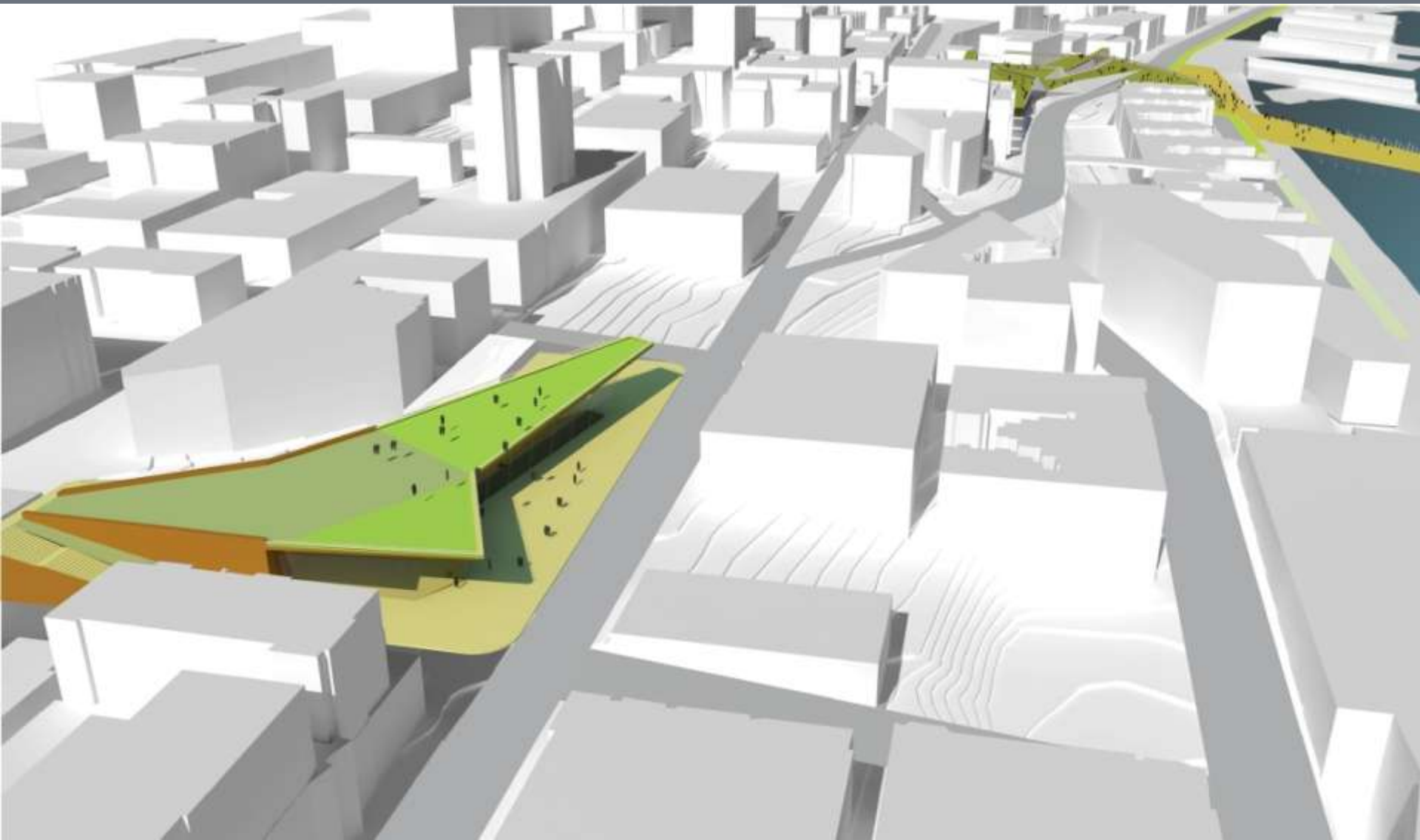


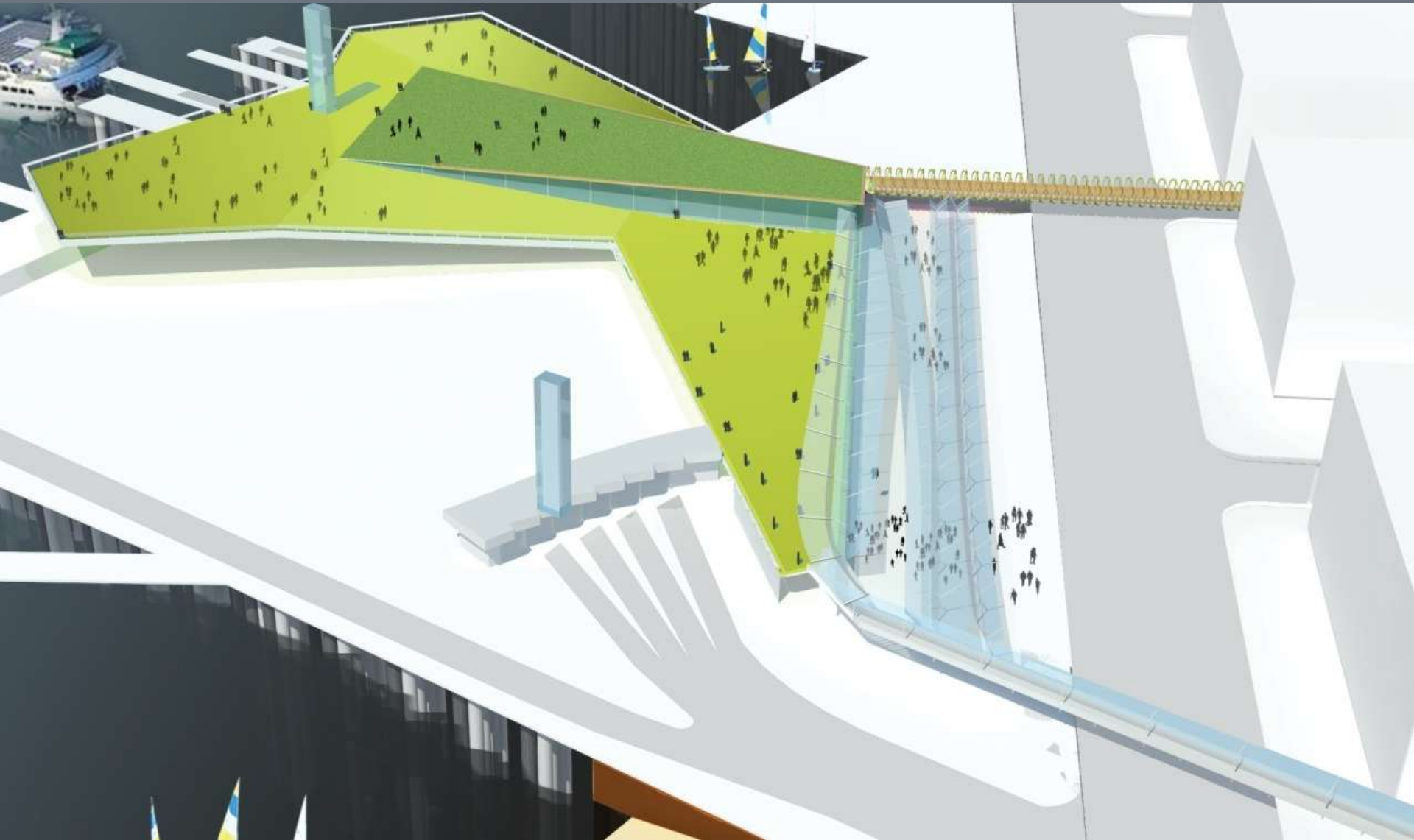
AQUARIUM PLAZA



THE AQUARIUM, MARKET + OVERLOOK FOLD





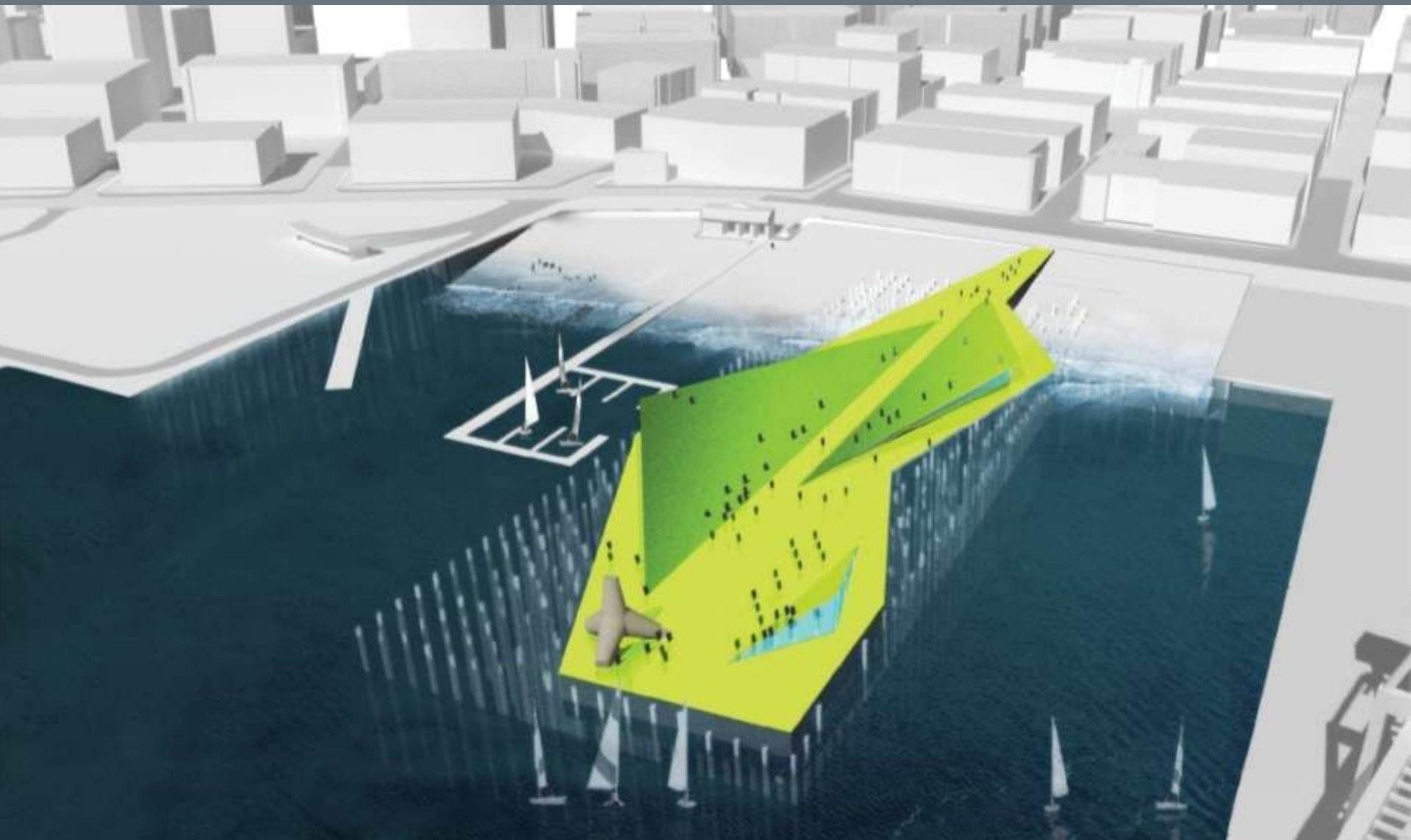


FERRY PARK SUN LAWN



COLMAN DOCK GALLERY





Waterfront
Seattle.org

PIER 48 FESTIVAL PIER + THE PORT





What's Next?

- Focused coordination with the Seawall replacement team
- Design team develops second iteration of Framework Plan and Concept Design
- Public outreach & engagement: get people down to the waterfront in Summer 2011
- Next big public event: October 2011
- Concept Design, Phasing Plan and Financing Strategy complete by mid-2012