

Image: 3xn.com

Image: 3xn.com

Preliminary concept images.

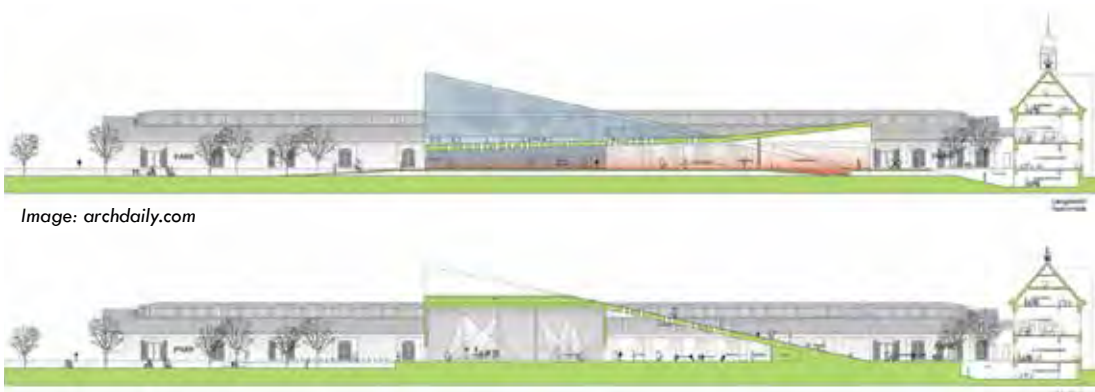


Image: archdaily.com

Image: archdaily.com

Section drawings.

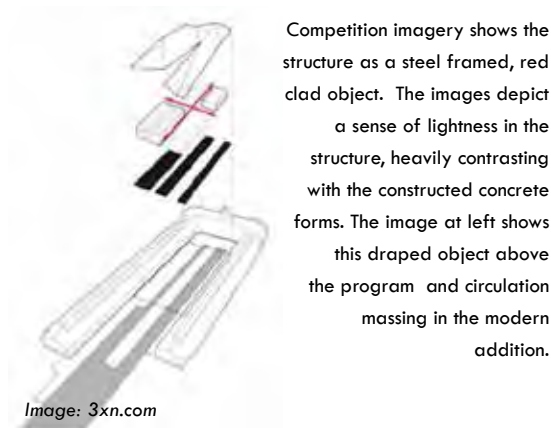


Image: 3xn.com

Competition imagery shows the structure as a steel framed, red clad object. The images depict a sense of lightness in the structure, heavily contrasting with the constructed concrete forms. The image at left shows this draped object above the program and circulation massing in the modern addition.



Image: archdaily.com

Competition rendering, aerial view.



Image: archdaily.com

Competition rendering: interior view.



Image: 3xn.com

View toward the highest point of the addition.

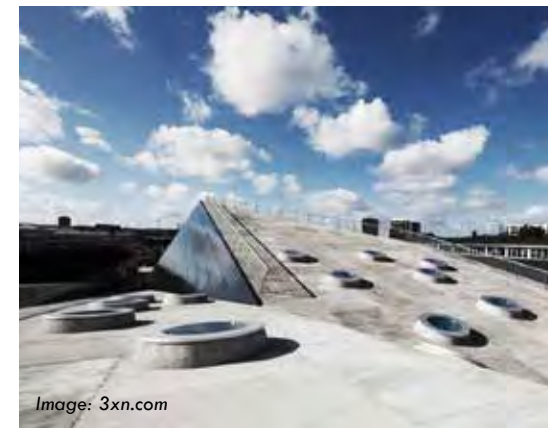


Image: 3xn.com

View toward the highest point of the addition.



Image: 3xn.com

Image: 3xn.com

Interior views of the addition.



Google Maps, 2013

■ SITE LOCATOR: Aarhus, Denmark

GODSBANEN

CULTURAL PRODUCTION CENTER

Study by Kyle Kinney

“a synergy between landscape and historical freight train warehouses”

Architect: 3XN
Client: Aarhus Municipality
Gross Floor Area (Addition): ~ 20,000 sqft
Opened: March 30, 2012
Cost: 16.25 Million USD

While supplying the local community with a center for primarily visual arts, this project draws from its historic U-shaped train warehouse by symbolically gesturing its form both outward and inward, a nod to the movement of trains as they constantly pull in and out of their stations. This large roof gesture provides a series of public and semi-public spaces while evoking a sense of ‘grit’ in its concrete structure that successfully contrasts yet relates to the historic train shed.